

Signal Safe Installation Guide

2012

This document is to be used as a guide in the installation of Signal Safe Software.

Version 4.0.1.4



REVISED: APRIL 30, 2012

©2012 BY ABM
ALL RIGHTS RESERVED

ABM DATA SYSTEMS
896 SUMMIT STREET, SUITE 107
ROUND ROCK, TX 78664
(512) 388-3250

ALL RIGHTS RESERVED. NO PART OF THIS PUBLICATION MAY BE REPRODUCED BY ANY MEANS WITHOUT WRITTEN PERMISSION FROM ABM. THE INFORMATION IN THIS PUBLICATION IS BELIEVED TO BE ACCURATE IN ALL RESPECTS. HOWEVER, ABM CANNOT ASSUME RESPONSIBILITY FOR ANY CONSEQUENCES RESULTING FROM THE USE THEREOF. THE INFORMATION CONTAINED HEREIN IS SUBJECT TO CHANGE WITHOUT NOTICE. REVISIONS OR NEW EDITIONS TO THIS PUBLICATION MAY BE ISSUED TO INCORPORATE SUCH CHANGES

Table of Contents

HOW TO CONTACT ABM DATA SYSTEMS4

 CORRESPONDENCE AND BILLING ADDRESS4

 SALES4

 TECHNICAL SUPPORT4

I. INSTALLING SQL EXPRESS DATABASE FOR SIGNAL SAFE5

 A. INSTALLING SQL 2005/2008 EXPRESS DATABASE5

 B. INSTALLING MICROSOFT SQL SERVER 20057

II. INSTALLING SIGNAL SAFE SOFTWARE13

 A. REQUIREMENTS NEEDED PRIOR TO INSTALLING SIGNAL SAFE SOFTWARE13

 B. SIGNAL SAFE SOFTWARE INSTALLATION.....13

 C. INSTALLING SIGNAL SAFE CLIENT VIEWER18

How to Contact ABM Data Systems

Correspondence and Billing Address

ABM Data Systems

896 Summit Street, Suite 107
Round Rock, TX 78664
(512) 388-3250

Sales

ABM Sales hours are Monday through Friday, 8:00 a.m. to 5:00 p.m. Central Standard Time.

Sales Phone: **(800) 767-7067**

Sales Fax: **(512) 215-4110**

Sales Email: sales@abmsystemsllc.com

World Wide Web Address: www.abmsystemsllc.com

Technical Support

ABM Support hours are Monday through Friday, 8:00 a.m. to 5:00 p.m. Central Standard Time.

Support Phone: **(800) 729-4226**

(512) 388-3250

Support Fax: **(512) 215-4110**

Support Email: support@abmsystemsllc.com

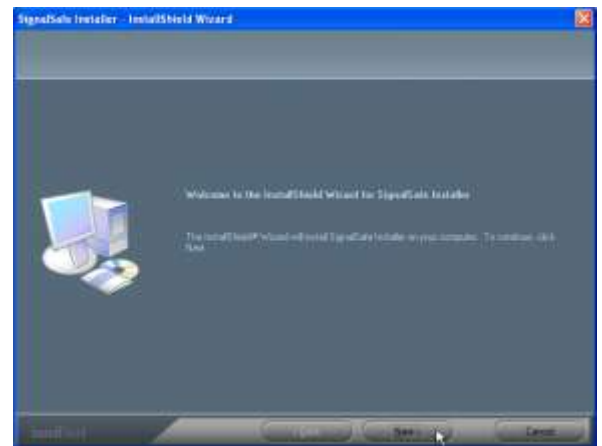
This manual may help you resolve Signal Safe problems. Please contact our Technical Support Department if we can help in any way.

I. Installing SQL Express Database for Signal Safe

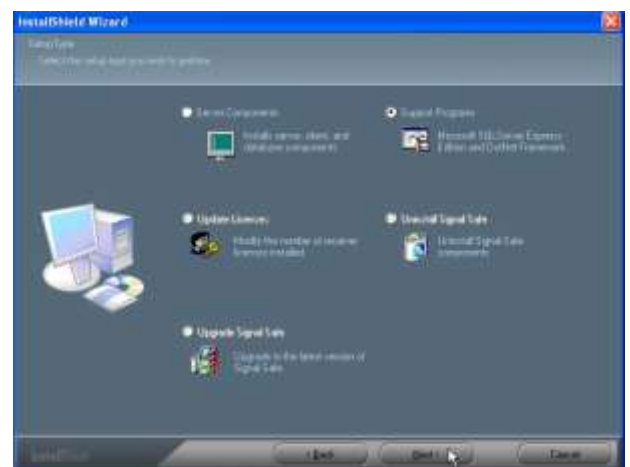
This procedure describes the installation of Signal Safe Server Database. It also assumes that the OS is Windows XP Professional or Windows 2003 server or better and already installed.

A. Installing SQL 2005/2008 Express Database

- 1) Log in to Windows, on the Signal Safe computer, using a logon ID that has administrative privileges.
- 2) Insert Signal Safe 4.0.1.4 Installation CD into CD Rom drive. Wait a few seconds for the Wizard to load.
- 3) If the CD does not auto start, open Windows Explorer choose the CD drive and double-click on the setup.exe in the disk directory.
- 4) The Signal Safe Installer Window will open; select Next.



- 5) In the Setup Type window Click on Support Programs then Click on the Next Button



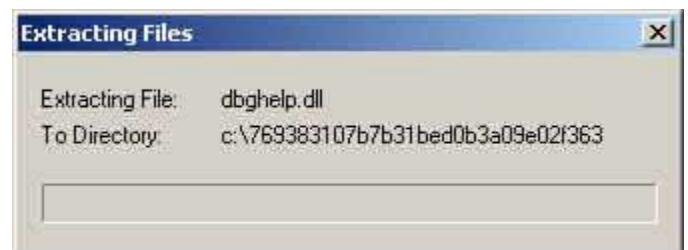
- 6) The Support Programs window will open

Select Microsoft SQL Server Express

Click on the Next button

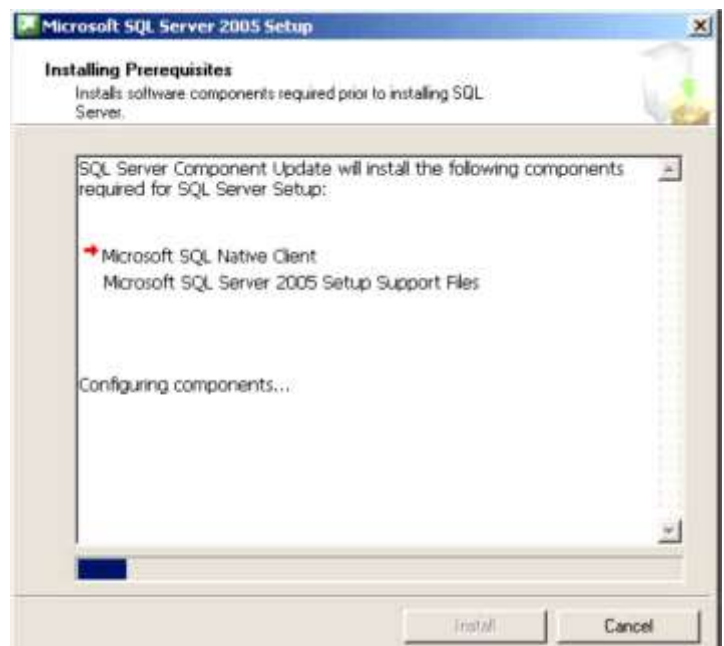


- 7) Windows will unpack the appropriate installation files.



- 8) The Installing Prerequisites window will open and load 2 components necessary for installation.

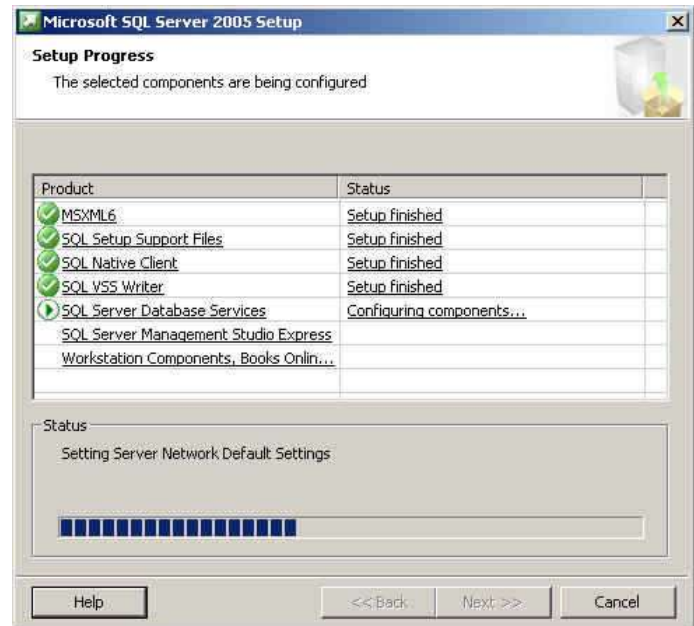
Click on the Install button once it is available.



- 9) The Setup Progress window will display.

Microsoft SQL Server 2005/2008 Setup performs a number of activities which takes several minutes.

Click on the Next button.



- 10) Click on the Finish button.

Reboot the server before installing the Signal Safe software.

B. Installing Microsoft SQL Server 2005

This procedure describes the installation of Signal Safe Server Database. It also assumes that the OS is Windows XP Professional or Windows 2003 server or better and already installed.

- 1) Log in to Windows on the Signal Safe computer using an ID with administrative privileges.

- 2) Insert the Microsoft SQL Server 2005 CD in the CD-ROM drive. Wait a few seconds for the wizard to load.

If the CD does not auto start, open Windows Explorer, choose the CD drive and double click on the setup.exe in the disk directory.

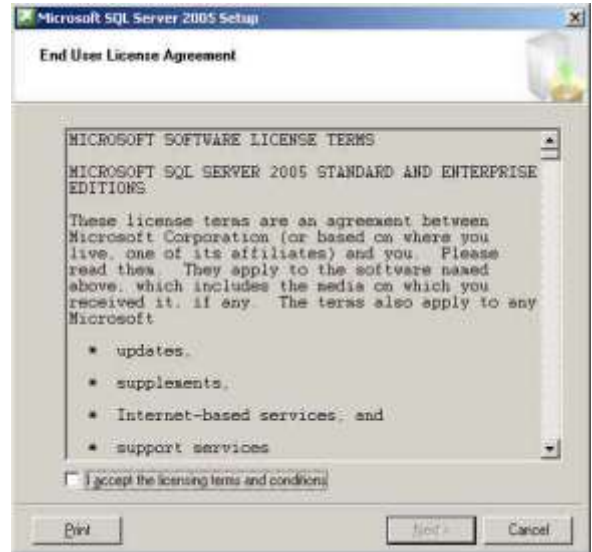
- 3) **From the Start window**, click on **Install** – Server components, tools, Books Online and samples.



- 4) In the End User License Agreement window, carefully review the agreement.

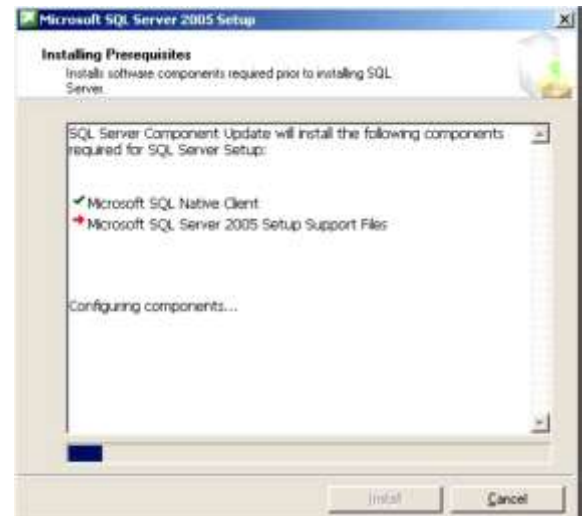
To continue with the install, select the “I accept the licensing terms and conditions” checkbox

Then click on the Next button.



- 5) In the Installing Prerequisites window, *allow these files to be installed.*

Click on the Next button when available.



- 6) Click the Next Button to continue.

The System Configuration Check window will come up.



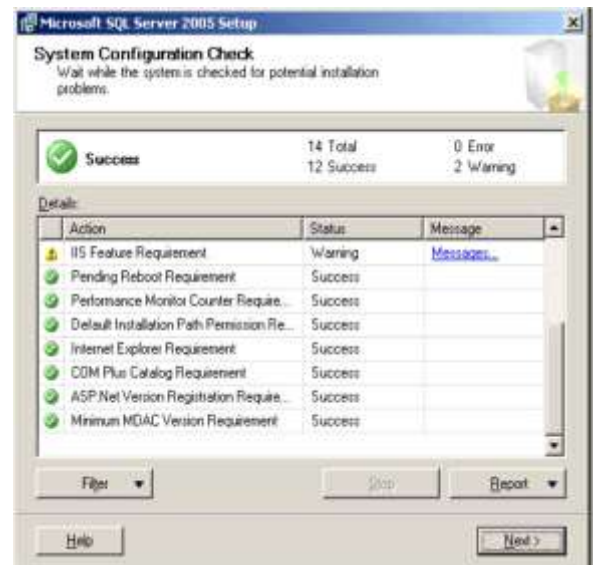
- 7) Read **the information in the** Welcome to the Microsoft SQL Server Installation Wizard **window.**

Click on the Next button.



- 8) In the System Configuration Check window, allow the system to run a self-diagnostics to ensure the server configuration meets the minimum specification to run Microsoft SQL Server 2005.

If the server meets the minimum requirements, click on the Next button.



*If a **Yellow triangle** comes up for the **IIS Feature Requirement**, this can be ignored. It is **not** needed for the Signal Safe database.*

- 9) In the Registration Information window, accept the defaults

Click on the Next button.



10) In the Components to Install window, select the following options:

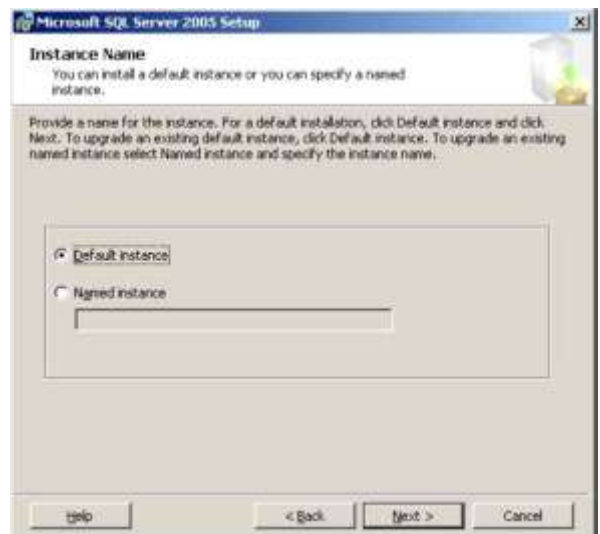
- **SQL Server Database Services**
- **Integration Services**
- **Workstation components, Books Online and development tools**

Click on the **Next** button.



11) In the Instance Name window, ensure that Default Instance is checked.

Then click on the Next button.

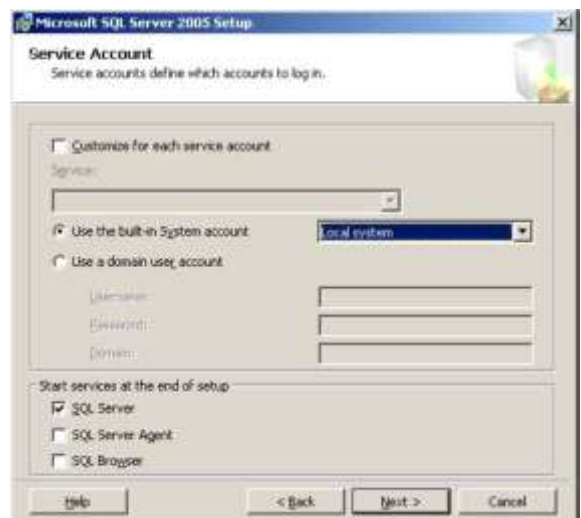


12) In the **Service Account** window:

- Select **Use the built-in System account**

Start services at the end of setup section:

- Select **SQL Server**
- Select **SQL Server Agent**



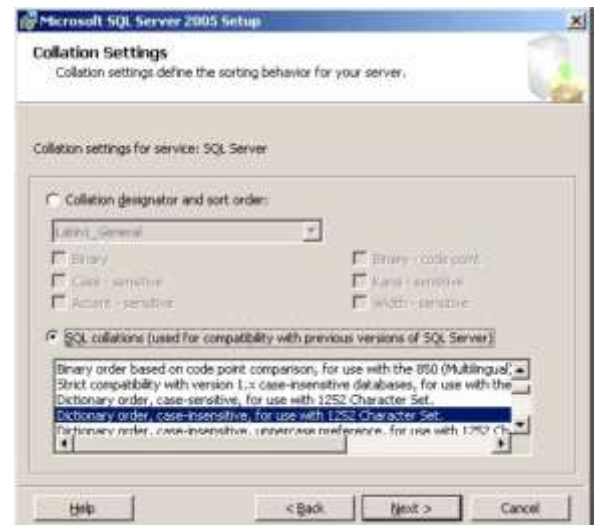
13) In the **Authentication Mode** window:

- Select **Mixed Mode**
- Specify the **sa** logon password – *you will be prompted for this password when installing the Signal Safe software.*



14) In the **Collation Settings** window, accept the defaults.

Click on the **Next** button.



15) In the **Error and Usage Report Settings** window, accept the defaults.

Click on the **Next** button.



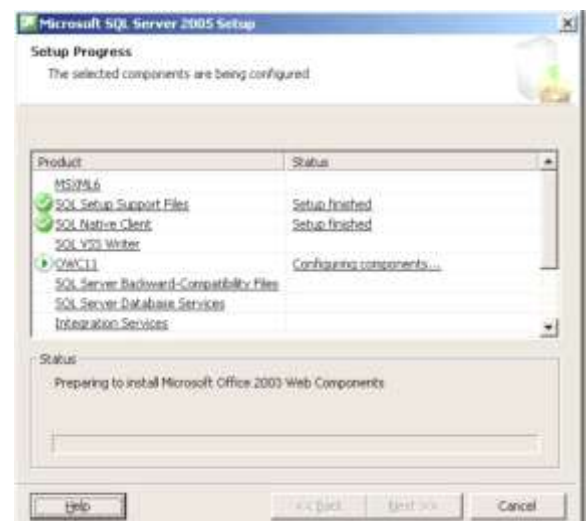
16) In the **Ready to Install** window.

Click on the **Install** button.



17) In the **Setup Progress** window files are copied from the CD to the specified folder.

MSSQL Setup performs a number of activities, which takes several minutes.



If the installation is taking place from a CD you will be prompted to exchange CDs' during this phase of the installation. If you are loading from a DVD installation will proceed without interruption.



- 18) In the **Completing Microsoft SQL Server 2005 Setup** window, accept the defaults.

Click on the **Finish** button.



- 19) After the database is completed, Signal Safe software can be installed.
Reboot the server before installing the Signal Safe software.

II. Installing Signal Safe Software

Now that the database is ready for use, the Signal Safe software can be installed onto the computer or server that will be considered the Signal Safe Server.

A. Requirements Needed Prior to Installing Signal Safe Software

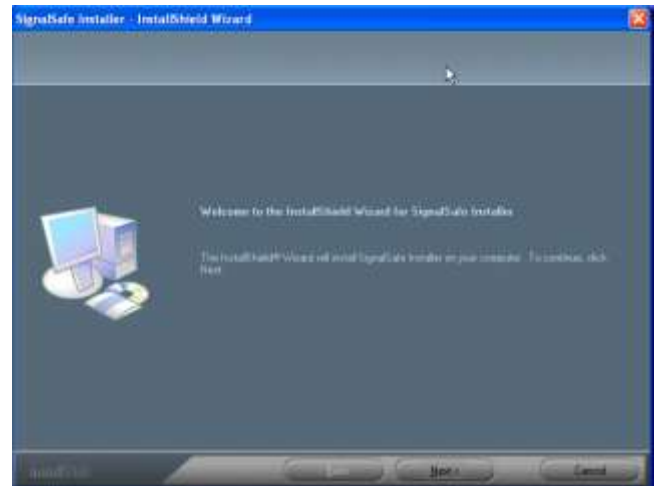
- 1) Attach the HASP Key to an available USB port on the computer or server where the software is to be installed. The HASP key was shipped with the Signal Safe software.
- 2) Make sure all current Windows Updates are installed on the computer or server prior to installing the Signal Safe software.
Important Windows Update needed at a minimum is .NET 3.0
- 3) A Windows login ID with administrative privileges for installation.

B. Signal Safe Software Installation

- 1) On the Signal Safe computer, log in to Windows using the administrator ID.
- 2) Insert the Signal Safe 4.0.1.4 CD in the CD-ROM drive. Wait a few seconds for the Wizard to load.

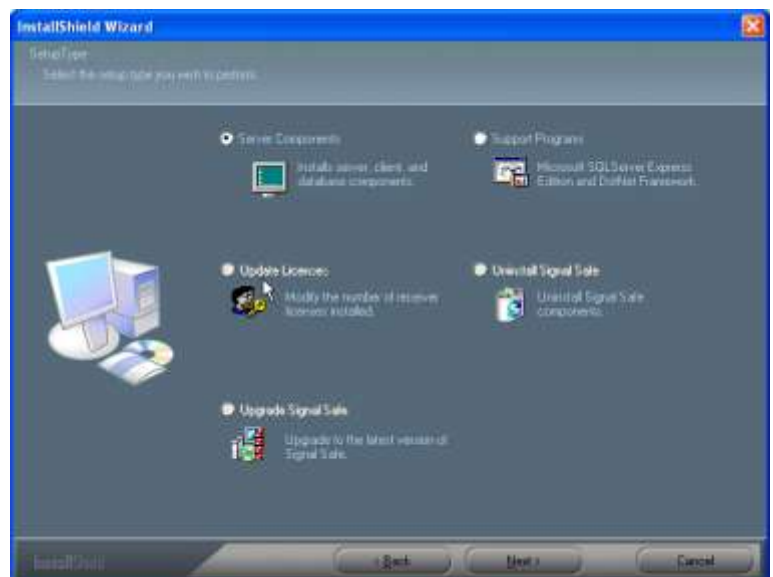
If the CD does not auto start, open Windows Explorer, choose the CD drive and double-click on setup.exe in the disk directory.

- 3) Read the information in the Welcome window.
Click on the **Next** button.



- 4) In the Setup Type window, select the **Server Components** option.

Click on the Next button.



This window has a number of choices, some of which are dimmed depending on which Signal Safe components (if any) are found on the machine.

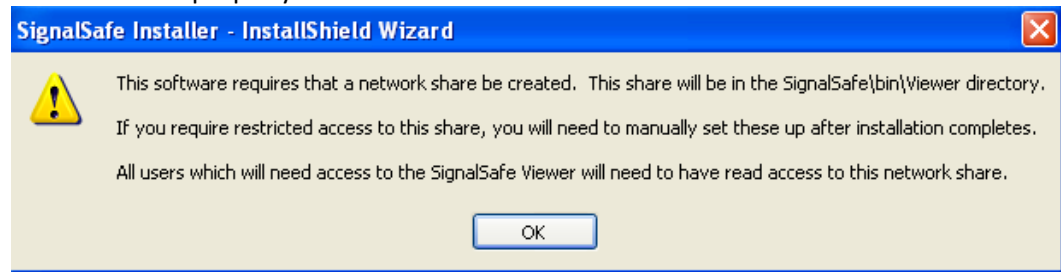
- Server Components** – choose this option to install Signal Safe server, client, and database components on a server.
- Update Licenses** – choose this option to modify the number of receiver licenses installed.
- Upgrade Signal Safe** – choose this option to upgrade the version of Signal Safe that you are running.
Please contact ABM Technical Support Department for the appropriate Upgrade code.

For upgrade instructions, see the **Signal Safe Upgrade Instructions** document (not included in this document).

- d. **Support Programs** – choose this option to install:
 1. Microsoft SQL Express database; See “[Installing Microsoft SQL Express](#)” on [page 5](#).
 2. Dot Net Framework
- e. **Uninstall Signal Safe** – choose this option to uninstall all Signal Safe components.

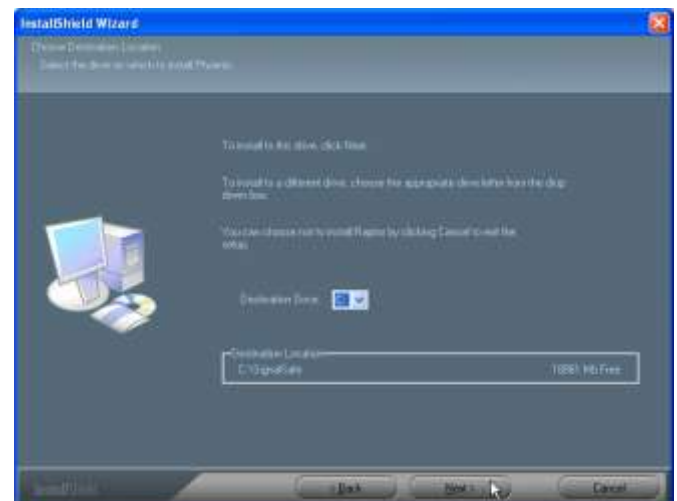
5) Click on the **Cancel** to exit Setup without loading anything onto the computer.

6) Read and Click on the OK button to install a Network Share. This step *MUST* be done in order for Signal Safe to work properly.



7) In the Choose Destination window, select the drive from the drop down list where Signal Safe will be installed.

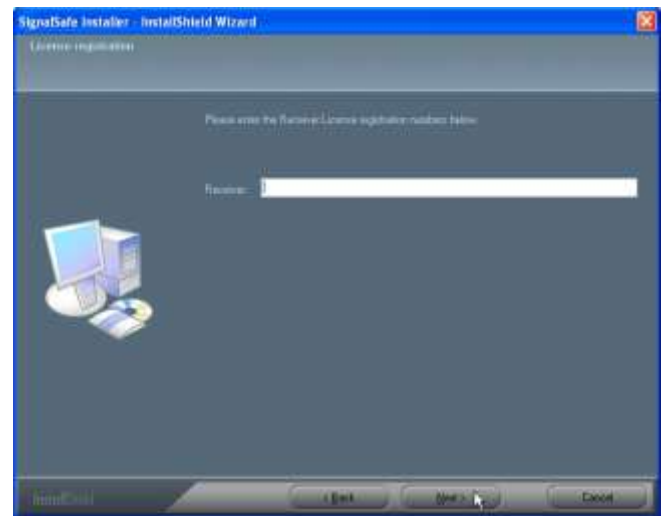
Click on the **Next** button.



8) Click on the Yes button twice, if two Question windows pop up.

- 9) In the License Registration window, enter the license code provided by ABM with the software package.

Click on the Next button.



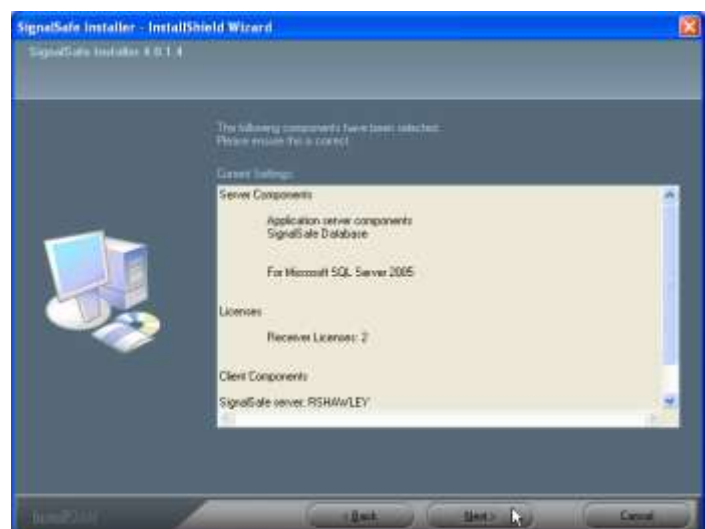
- 10) In the Select Collect Ports window, select the Com Port that each receiver licensed will be connected to.

Click on the Next button.



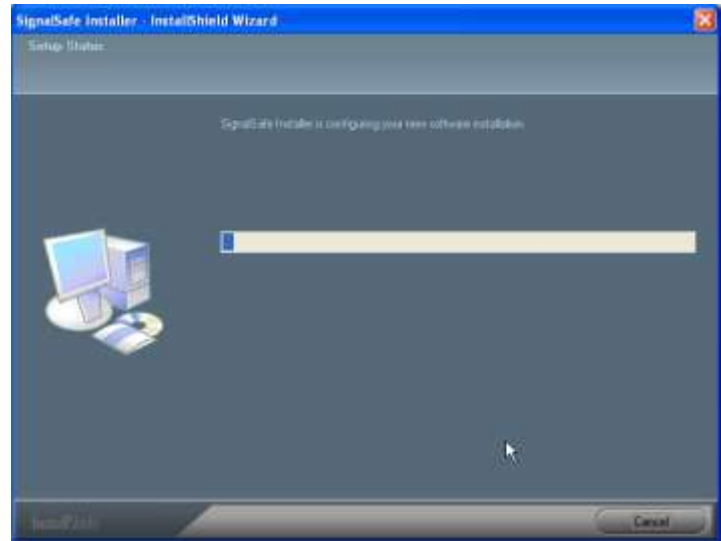
- 11) In the Current Settings window, verify settings for installation are correct.

If all is correct, click on Next button.



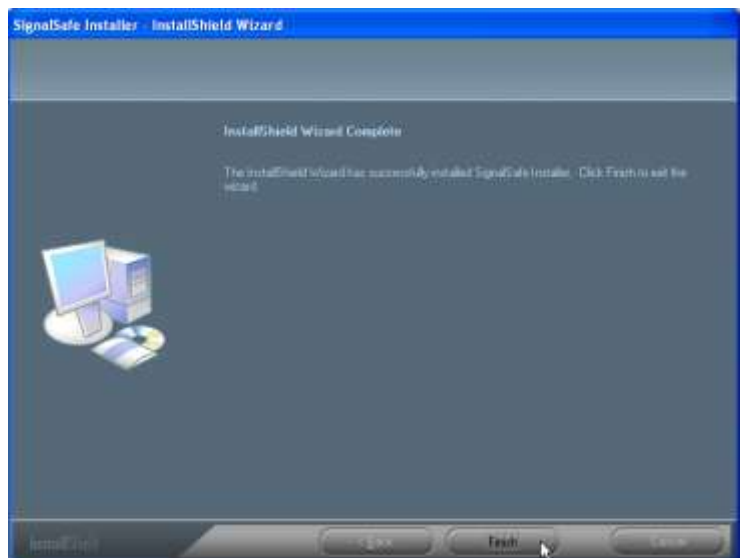
- 12) The Setup Status window will appear while the components are being installed.

The status bar will move to 100%.



- 13) The Install Wizard Complete window will pop up once installation is complete.

Click on the Finish button.



If the Application Install – Security Warning window pops up, select the Install button.



- 14) An Installing Signal Safe Viewer window will pop up after either the Finish button or Install button is selected. Let the window install the Viewer component.
- 15) Once the installation is complete, the Signal Safe Viewer window will pop up on the screen.
- 16) Close out of the viewer by clicking on the red X in the upper right hand corner.
- 17) Then click on the Finish button.
- 18) Reboot the server.

Signal Safe is now completely installed. Connect the device(s) to the appropriate port(s) that are to use Signal Safe. Then start the Signal Safe service and launch the Signal Safe Viewer.

C. Installing Signal Safe Client Viewer

This section of the manual assumes that the Signal Safe Printer Replacement Software has already been installed on the server and working properly. *If this is not the case, please follow the directions starting at the beginning of this manual.*

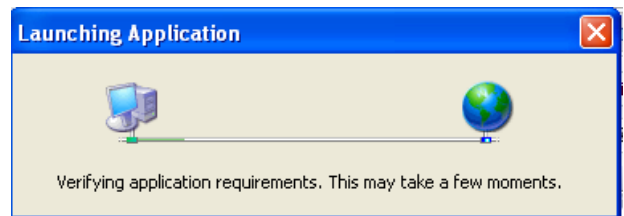
- 1) Log on to the computer with the administrator login that will be using the Signal Safe Client Viewer.
 - 2) Click on the Start button (this step is for the versions of Windows XP and newer).
 - 3) Follow the next step depending on the version of Windows the client is using:
 - a) Windows XP:
 - Click on Run
 - Click on Browse
 - Click on Network
 - Click on Entire Network
 - Click on Windows Network
 - Click on the domain or workgroup the Signal Safe Server is located on
 - Click on the server name
 - Login using an administrator login if prompted
 - Click on Signal Safe
 - Click on Bin
 - Click on Viewer
 - Double click on setup.exe
 - Click on OK button in the Run box
- ** Go to Step 4) ****

b) Windows 7:

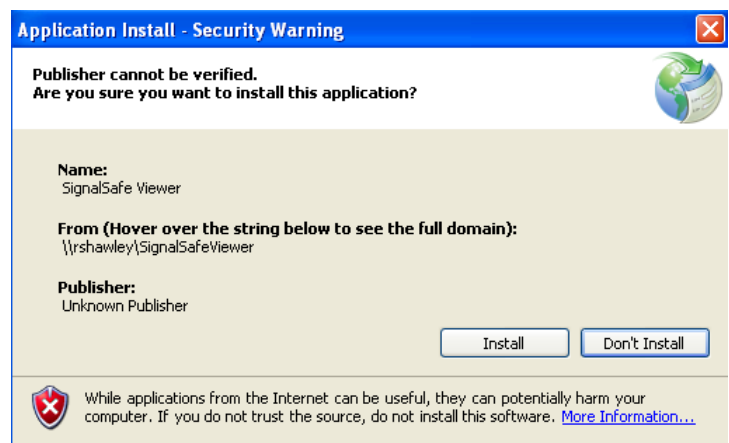
- Click on Network
- Click on the Signal Safe Server Name
- Click on Signal Safe
- Click on bin
- Click on Viewer
- Right click on setup.exe
- Select Run as Administrator

**** Go to Step 4) ****

4) The Launching Application Window will open.



5) Click on the Install Button when the Application Install Security Warning Window Opens.



6) The Signal Safe Viewer will open and show the signals that are coming into the Signal Safe server.

If there are any errors while installing the Signal Safe Client Viewer, please contact [ABM's Technical Support](#) for assistance.