

Manitou Overview Hamburger Icon Menus

Upon arrival into the Manitou Web Client, the header notes the user is Home.

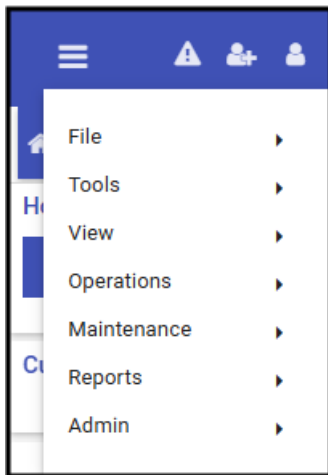
Manitou Web Client Header



The Header displays HOME upon arrival into Manitou.

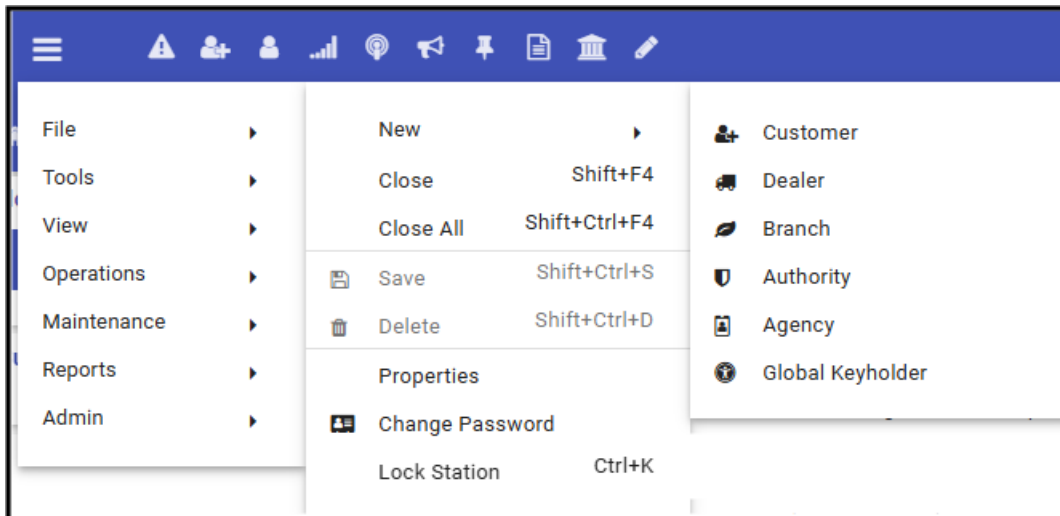
Hamburger Icon

The first item on the left is the Hamburger Icon. This item, when selected reveals the menu items.



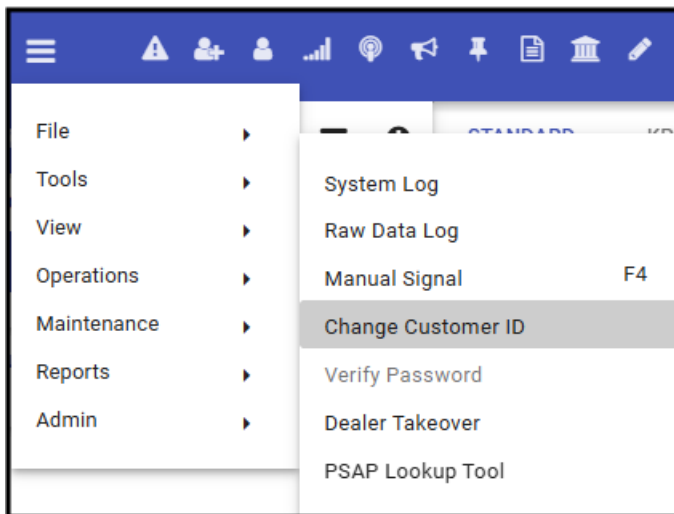
Any items with keystrokes noted match up to keyboard keys. Such as SHIFT + F4 (Function Key) closes the current open form.

File Menu



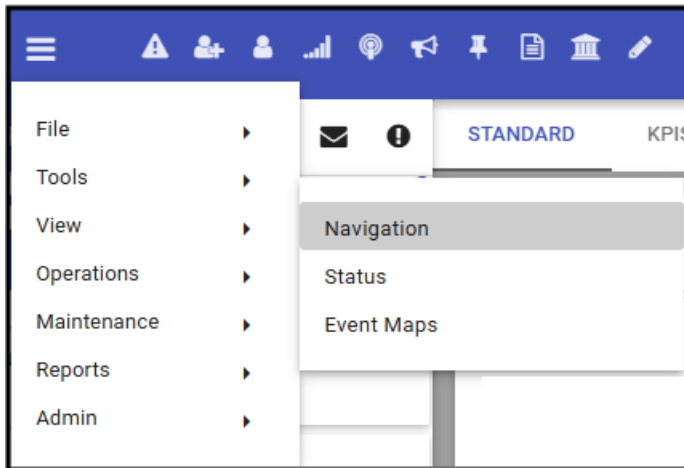
- **New** provides direct access for creating new entities.
- **Close** one record and **Close all** open records.
- **Save** and **Delete** records.
- **Properties** - Updates settings for the user's experience.
- **Change Password** - allows operators change their password as required.
- **Lock Station** - Pauses the workstation for a short period.

Tools Menu



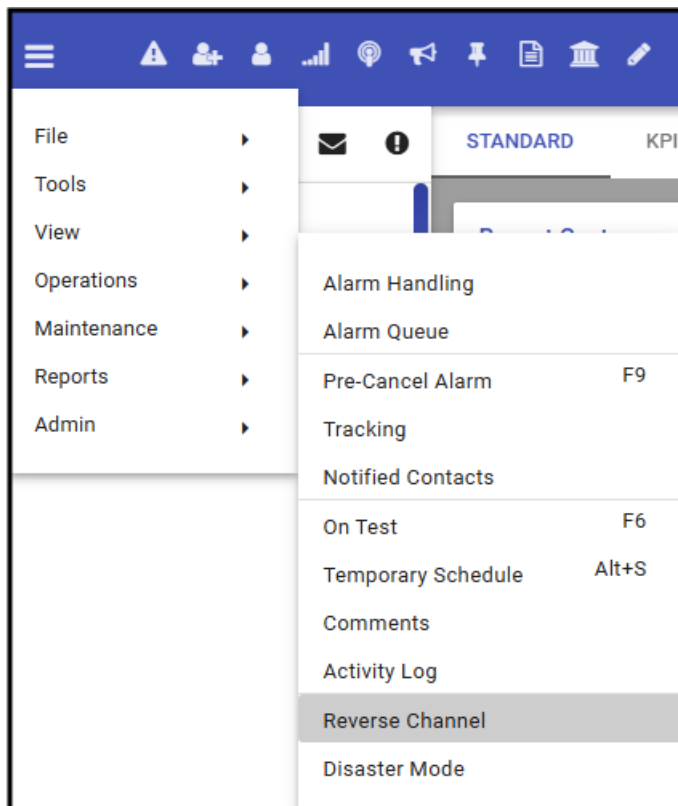
- **System Log**- Tracking communications and actions taken on the Manitou System.
- **Raw Data Log**- Search of the raw signals received into Manitou.
- **Manual Signal**- Allows operators to send signals to test or restore accounts.
- **Verify Password** - When a customer record is active allows an operator to quickly verify a contact, or customer, password.
- **Dealer Takeover**- Allows the selection and transfer of accounts from one dealer to another.
- **PSAP Lookup Tool** - Looks up the PSAP (Public Safety Answering Point) details of the PSAP IDs configured in Manitou if the company has Location services enabled.

View Menu



- **Navigation** - Collapses and expands the navigation frame on the left-side of the view.
- **Status** - Collapses and expands the lower counts section at the bottom of the view.
- **Event Maps** - Displays the Maps of events into Manitou based on the "language" it speaks.

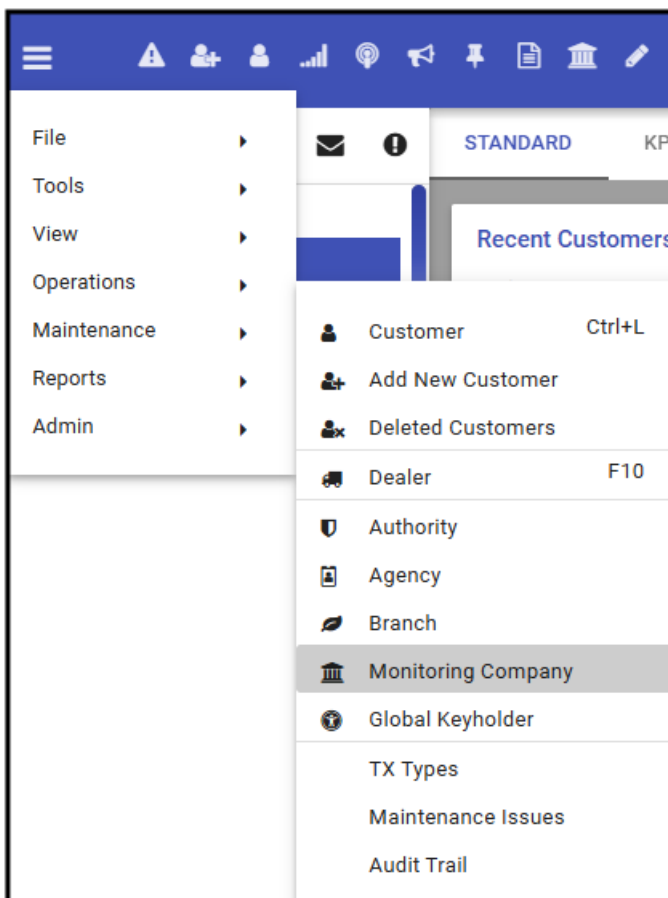
Operations Menu



- **Alarm Handling** - Enters the user into Alarm Handling mode where they may choose Auto Get or Manual Alarm delivery.

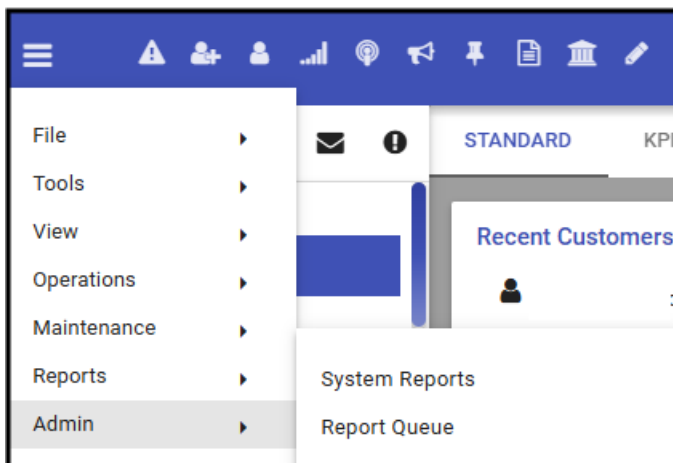
- **Alarm Queue**- Loads the Manitou Alarm queue into the Monitoring group assigned to the workstation.
- **Pre-Cancel Alarm**- Allows a user to validate any call-in person and if required, cancel an alarm.
- **Tracking**- Assigns a selected customer to the logged in user. Most often used to ensure no one else takes a manual or expected alarm.
- **Notified Contacts**- After leaving a message or sending an email, Manitou allows users to create a "Notified Contact" that is retained in a list for a period of time. If that person contacts the Monitoring Center, the user may use this to locate who called and for which alarm.
- **On Test**- Allows users to place accounts On Test without loading the record or coming from an alarm.
- **Temporary Schedule**- Allows users to create a schedule override for the validated account user without having to load the customer and navigate to the Open/Close schedules.
- **Comments**- Allows users to load a customer account's comments and add Temporary Comments without loading the entire customer.
- **Activity Log**- Allows users to load a customer account's activity log without loading the entire record.
- **Reverse Channel** - Provides user access to available Reverse Channel Commands as available to send items to the monitored location with this enabled.
- **Disaster Mode**- Sometimes referred to as "Storm Mode" allows users to create emergency notices that trigger specific system-configured actions such as ignoring lower priority events or sending an automated notification. Once created as a Warning, these items flag as within the Disaster Area in the Alarm queue and may be cleared if the rules set allow it.

Maintenance Menu



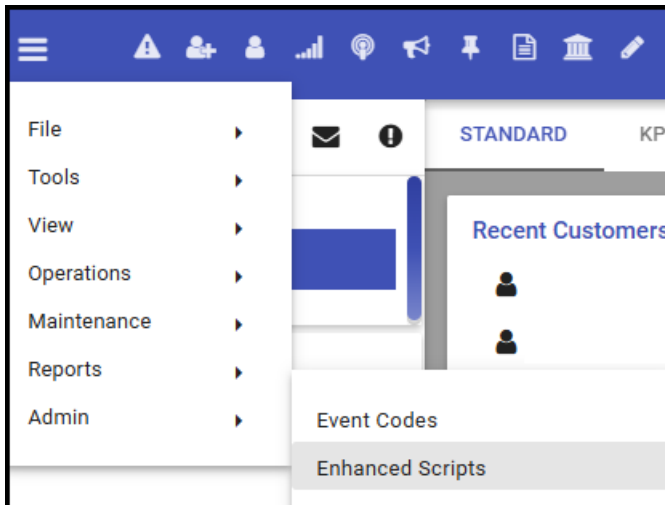
- [Customer](#)- Loads a search to load a customer record.
- [Add New Customer](#)
- [Deleted Customers](#)- Loads the listing of customers removed from Manitou. Default list loads the last 30-days.
- [Dealer](#)- Loads the Dealer search card and allows searching for a Dealer record. If accessed with a Customer in focus, the Dealer of that customer loads.
- [Authority, Agency, Branch and Global Keyholder](#) - Loads the search card to search for and load the entity.
- [Monitoring Company](#)- Loads the Main Company record which houses the Company details, Action Patterns, and company contacts.
- [TX Types](#) - Loads the Transmitter Types form where signal translations reside based on the Types set.
- [Maintenance Issues](#) - Loads the Maintenance issues form and allows searching for entities with Maintenance Issues. If accessed with an active customer, the form loads with that customer filtering the results.
- [Audit Trail](#)- Loads the Audit Trail form and the last 24-hours of changes made to all entities.

Reports Menu



- [System Reports](#)- Loads the available reports to run.
- [Report Queue](#)- Loads the Reports Queue showing which reports ran and if they were successful or not.

Admin Menu



- [Event Codes](#) - Lists and allows the management of the Event Codes in use in Manitou.
- **Enhanced Scripts** - Allows the creation of script messages for specific notifications and User data collection for alarm processing.

[←Manitou Overview](#) → [Manitou Overview Shortcut Icons](#)