

SWS - Forms in the Report Menu - System Reports - Master File Reports - Output Device Types

Last Modified on 08/05/2024 11:17 am EDT

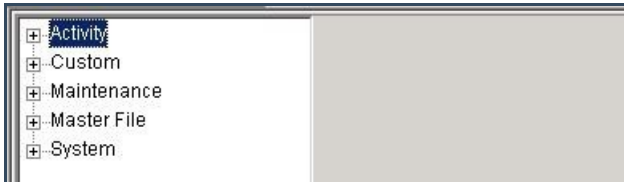
The Output Device Types Report displays a list of all Output Devices Types currently configured in Manitou.

Generating an Output Device Types Report

Perform the following steps to generate an Output Device Types Report:

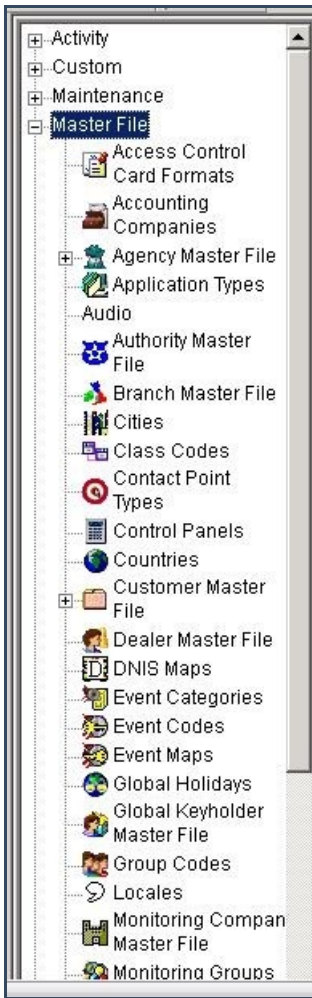
1. Navigate to the Reports menu, and select "System Reports".

Result: The "System Reports" Navigation Tree displays as shown in the following screenshot:



2. Click the "Master File" Navigation Tree Node.

Result: The Master File section of the Navigation Tree expands as displayed in the following screenshot:



3. Double-click "Output Device Types".

Result: The "Output Device Types" form displays as shown in the following screenshot:

Output Device Types

Report Description: Priority:

Attributes

- Phone
- Fax
- Pager
- Email Address
- Web Address
- Retransmission

Type

- Numeric Pager
- Alpha Pager
- SMS Phone
- Fax
- E-Mail
- Printer
- Retransmission

Protocol

- TAP
- DTMF
- SMS
- Fax
- MAPI
- Text

Group by:

- None
- Attribute
- Type
- Protocol

4. Items in the "Attributes" area of the form display as preselected. If you want, deselect any items you want to exclude from your Report.
5. Items in the "Protocol" area of the form display as preselected. If you want, deselect any items you want to exclude from your Report.
6. Items in the "Type" area of the form display as preselected. If you want, deselect any items you want to exclude from your Report.
7. If you want to group your Report by "Attribute", "Type", or "Protocol", select the item in the "Group by:" area of the form.
8. Click "Next".

Result: The Distribution Tab displays as shown in the following screenshot:

Override or unlisted destination:

Override recipient's name:

Override destination type:

Override destination address (Fax/Email):

Contact list destination:

Default printer:

Contact list type:

Customer:

Show suppressed contacts Hold for preview

Contacts

- Anytime Bill
- Mary Beth
- Pete - Non Opening user
- Same Spade
- John Doe
- Jg
- Jeff Herd
- Non Rotating user 1
- Non Rotating user #2
- Jane Doe
- 11
- 12
- 13
- 14
- 15
- 16
- 17
- 18
- 19
- 20
- 21

Dealer

- Dealer GH 202 for testing

Branch

Agency

Authority

Customer

- George's testing account
- Company (printer only)

Reports Distribution

9. For instructions on distributing your Report, refer to the "System Reports" document.