

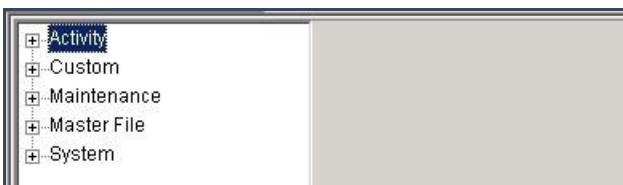
# SWS - Forms in the Report Menu - System Reports - Custom Reports - Dealer Signal Count

Last Modified on 08/01/2024 3:51 pm EDT

Perform the following steps to generate a Dealer Signal Count Report:

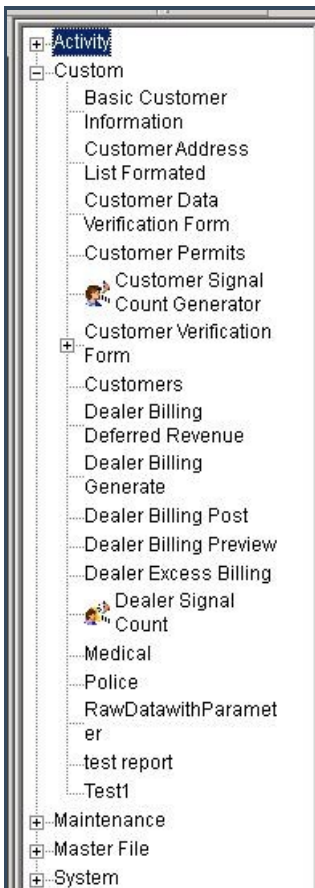
1. Navigate to the Reports menu, and select "System Reports".

**Result:** The "System Reports" Navigation Tree displays as shown in the following screenshot:



2. Click the "Custom" Navigation Tree Node.

**Result:** The Custom section of the Navigation Tree expands as displayed in the following screenshot:



3. Double-click the "Dealer Signal Count" Navigation Tree Node.

**Result:** The Dealer Signal Count Report form displays as shown in the following screenshot:

The screenshot displays a software interface for the "Dealer Signal Count" report. On the left is a navigation tree with the following structure:

- Activity
  - Custom
    - Basic Customer Information
    - Customer Address List Formated
    - Customer Data Verification Form
    - Customer Permits
      - Customer Signal Count Generator
    - Customer Verification Form
    - Customers
    - Dealer Billing
      - Deferred Revenue
      - Dealer Billing Generate
      - Dealer Billing Post
      - Dealer Billing Preview
      - Dealer Excess Billing
      - Dealer Signal Count
    - Medical
    - Police
    - RawDatawithParameter
    - test report
    - Test1
  - Maintenance
  - Master File
  - System

The main window area is titled "Dealer Signal Count" and contains the following fields:

- Report Description: Dealer Signal Count
- Priority: 6
- From: [Empty text box]
- To: [Empty text box]
- Dealer ID: [Empty text box]

4. To run a Dealer Signal Count Report, enter a beginning value in the "From:" field and an ending value in the "To:" field. The system will report on all items for the Dealer ID that fit between the beginning and ending values.
5. Click "Next".

**Result:** The Distribution Tab displays as shown in the following screenshot:

Override or unlisted destination:

Override recipient's name:

Override destination type:

Override destination address (Fax/Email):

Contact list destination:

Default printer:

Contact list type:

Customer:

Show suppressed contacts  Hold for preview

Contacts

- Anytime Bill
- Mary Beth
- Pete - Non Opening user
- Same Spade
- John Doe
- Jg
- Jeff Herd
- Non Rotating user 1
- Non Rotating user #2
- Jane Doe
- 11
- 12
- 13
- 14
- 15
- 16
- 17
- 18
- 19
- 20
- 21

Dealer

- Dealer GH 202 for testing

Branch

Agency

Authority

Customer

- George's testing account
- Company (printer only)

Reports Distribution

6. For instructions on distributing your Report, refer to the "System Reports" document.