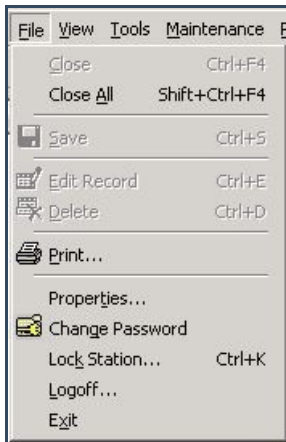


SWS - Navigation - Toolbar Menus

Last Modified on 08/07/2024 11:40 am EDT

File Menu



The Toolbar File Menu includes the following options:

Close - Closes the current open window.

Close All - Close all open windows listed under the "Current" file icon of the Navigator Pane.

Save - Saves any changes to a record.

Edit Record - Enable the user to edit the current record.

Delete - Deletes the current record.

Print - Prints selected material to the designated printer output.

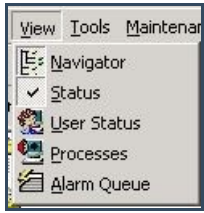
Properties - Allows a user to enable certain functions such Debugging Mode and the use of an internal RTF viewer for reports.

Change Password - Allows a user to change his password Lock Station - locks the user station and requires the user to enter his password to unlock it.

Logoff - Logs the current user off of the system without exiting the software.

Exit - Exits the software.

View Menu



The Toolbar View Menu includes the following options:

Navigator - Hides the Navigator Pane and maximizes the Application Pane.

Status - Hides and unhides the Status Bar.

User Status - Displays the activities of every workgroup user currently logged into Manitou.

Processes - Displays all the Manitou applications currently active in Manitou.

Alarm Queue - Displays all the active alarms in Manitou and allows users to display the Alarm Queues for different Monitoring Groups.