

Custom Dashboards

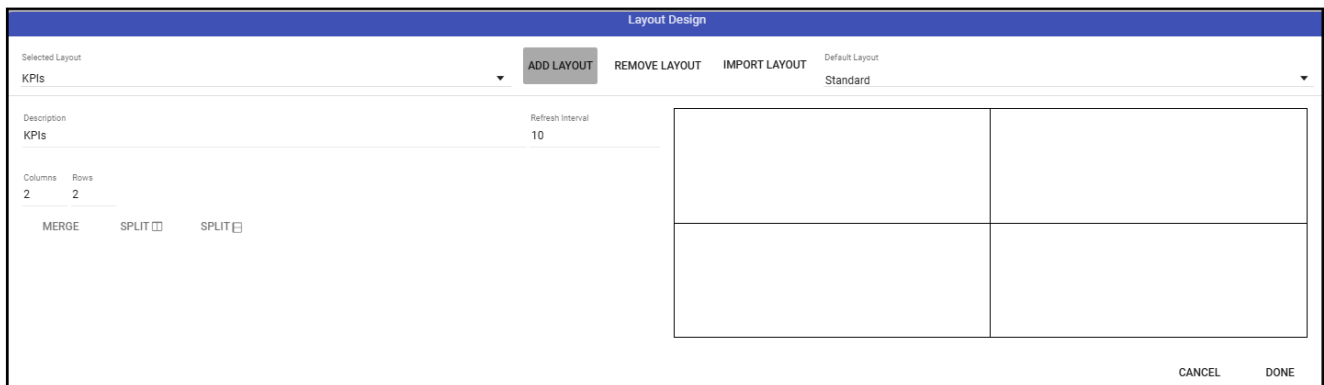
The Manitou Web Client allows, those with permission, the ability to create custom Dashboards.

Creating a Dashboard

Click the Edit pencil on the Standard (default) Dashboard.



Add a Layout

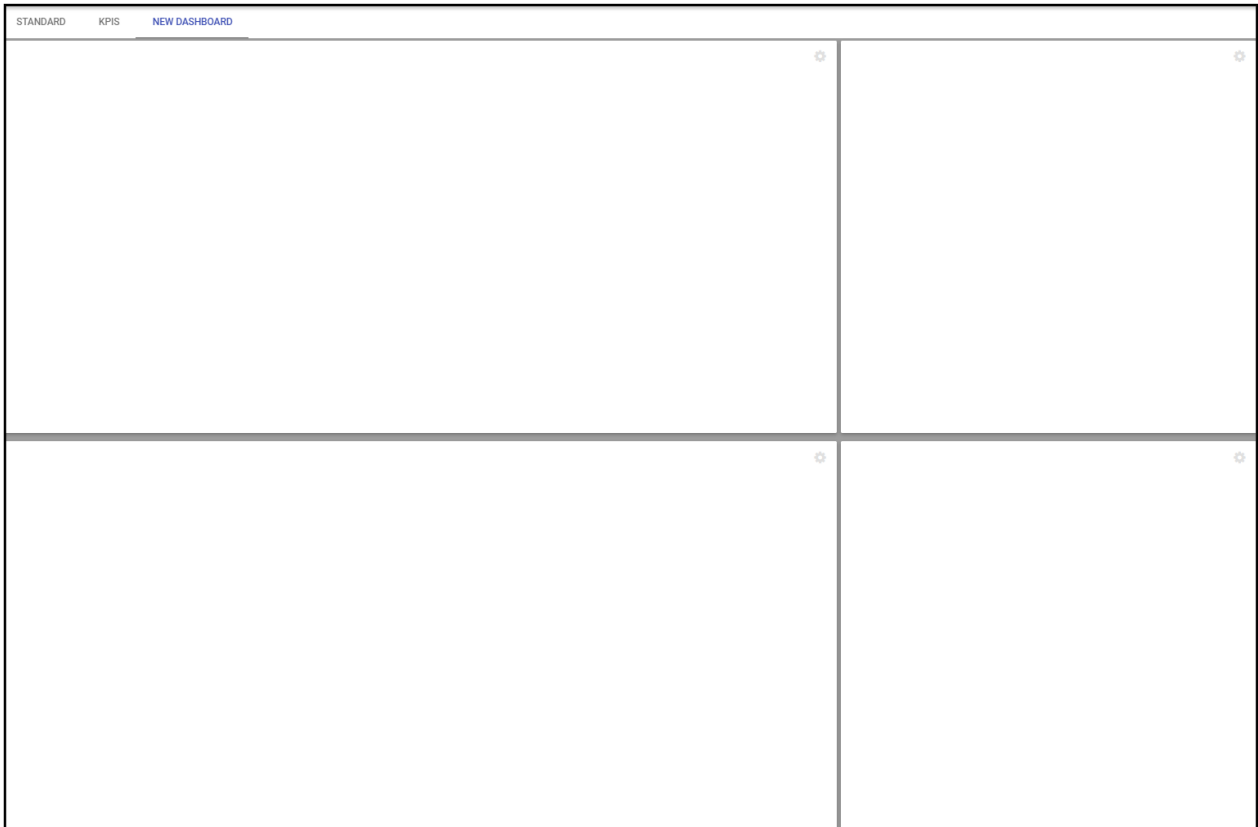


1. Enter a description. This is how it displays across the top of the Manitou Dashboards.
2. Set the shape and size of the layout.
3. Merge or split as desired.
4. Click Done.

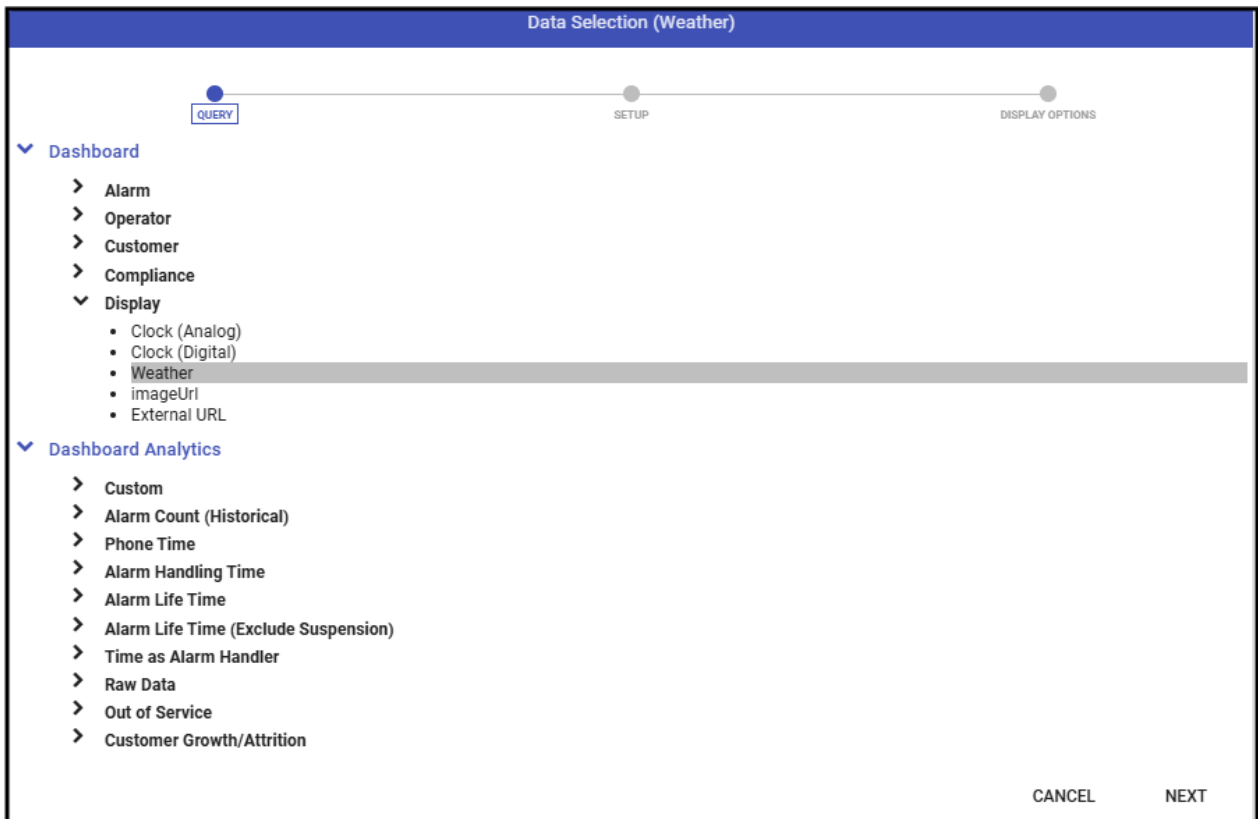
Choose what to display

The new dashboard shows at the top of the Dashboards.

1. Select the Dashboard.



2. Click the settings icon in the upper right-hand corner of each frame.
3. Choose the item to include in the frame.



4. Click Next.
5. Configure the settings for the selected item.

Current Weather (Weather)

● QUERY
● SETUP
● DISPLAY OPTIONS

Title
Current Weather

Use Coordinates

Latitude Longitude
32.5980 48.5964 JUMP TO

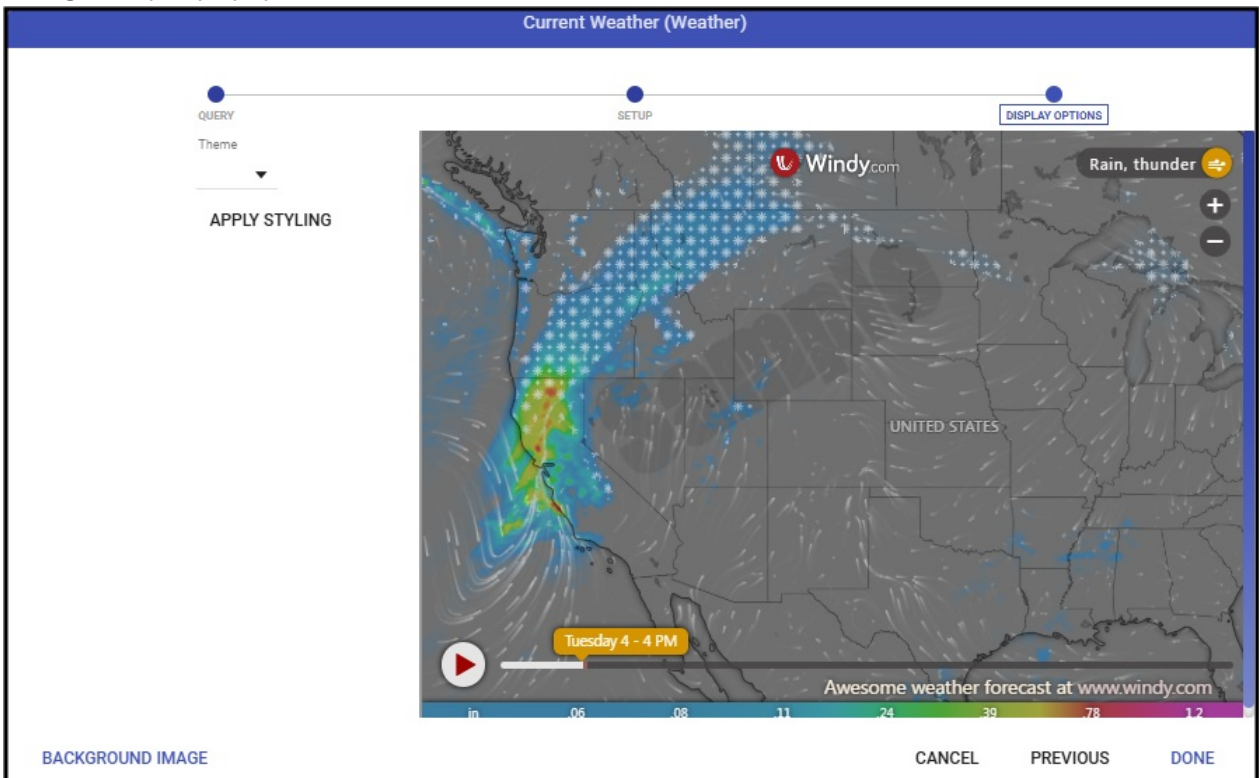
Scale Display Altitude
4 Rain, Snow Surface

Wind Metric Temperature Metric
Miles per Hour (mph) Fahrenheit

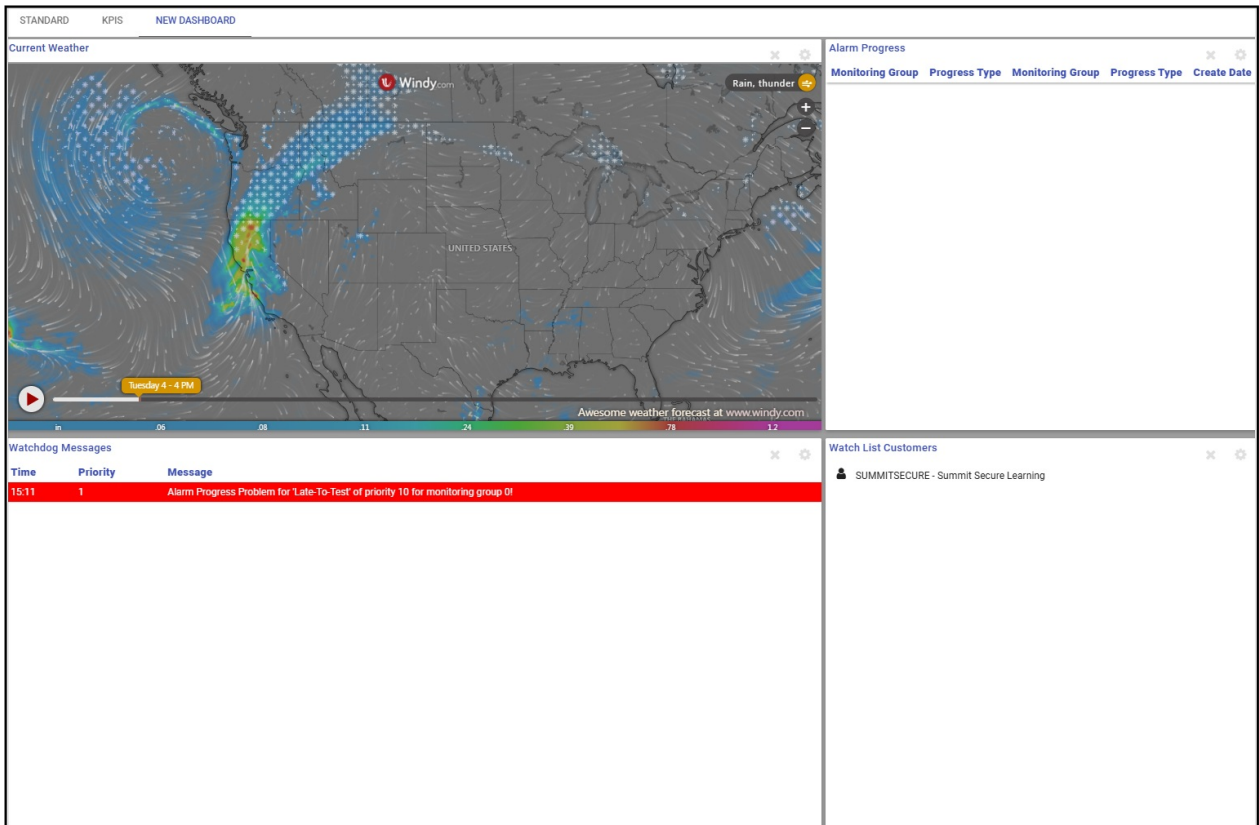
Hide Controls Show Marker

CANCEL PREVIOUS NEXT

6. Click Next.
7. Configure any display options.

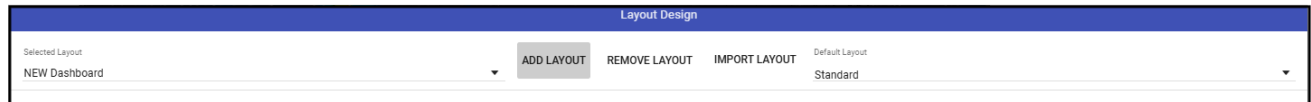


8. Click Done.
9. Repeat as needed for each frame.



Set Default Dashboard

If desired, users may select which dashboard they wish to load by default.



1. Click the **Edit Pencil**.
2. Drop down the **Default Layout** drop down.
3. **Choose** the dashboard to use.
4. Click **Done**.