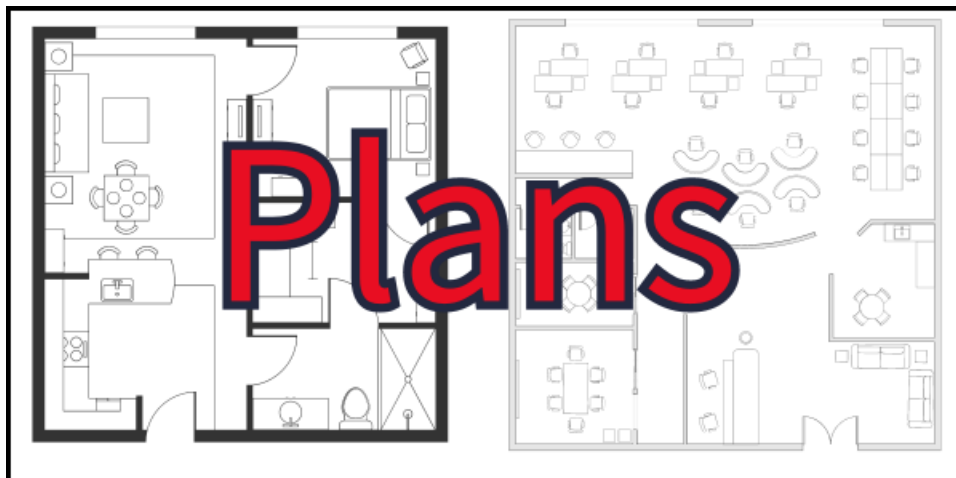


Plans



Location plans, in alarm monitoring records, provide a detailed visual representation of a monitored site, outlining key areas such as **entrances, exits, rooms, and zones with sensors or alarms.**

Operators use these plans to quickly identify the specific area of concern when an alarm triggers, allowing them to direct responders accurately and efficiently. This reduces response times and ensures the appropriate personnel reach the correct location.

Technicians rely on location plans to locate devices, sensors, or wiring paths when conducting maintenance or upgrades, ensuring they work in the correct areas without causing disruptions. These plans also help identify areas that need additional security coverage or adjustments to improve system effectiveness.
