



SnapReporter Installation Guide

Contents

Overview	1
Prerequisites	1
Installation Procedures.....	1
Confirming the Installation	6
Connecting a Data Source	6

Confidentiality Statement

All information contained in this document is provided in confidence and shall not be published or disclosed wholly or in part to any other party without the expressed prior written permission of Bold Technologies. It shall be held in safe custody at all times. These obligations shall not apply to information which is published or becomes known legitimately from sources other than Bold Technologies.

Acknowledgments

The information contained in this document represents the current view of Bold Technologies on the issues discussed as of the date of publication. Bold Technologies must continuously respond to the changing market conditions; therefore, it should not be interpreted to be a commitment on the part of Bold Technologies. Bold Technologies cannot guarantee the accuracy of any information presented after the date of publication. This document is for informational purposes only. The system descriptions and diagrams contained within should be used as guidelines only. BOLD TECHNOLOGIES MAKES NO WARRANTIES, EXPRESS OR IMPLIED, IN THIS DOCUMENT.

Bold Technologies acknowledges trademarks or registered trademarks in the United States and other countries of other entities mentioned in this document, but not listed here.

Copyright

©2014 Bold Technologies. All Rights Reserved.

Corporate Office: 421 Windchime Pl., Colorado Springs, CO 80919 USA

INSTALLING SNAPREPORTER

Overview

SnapReporter provides for report generation through a user-friendly, windows-based interface. SnapReporter eliminates the need for SQL scripting.

Prerequisites

The following components must be in place before you install SnapReporter:

- Microsoft .Net Framework 4
- C++ 2010Runtime Libraries (x86)

Note: If you do not have this software installed, the Bold SnapReporter setup software will prompt you to install it during this procedure.

Installation Procedures

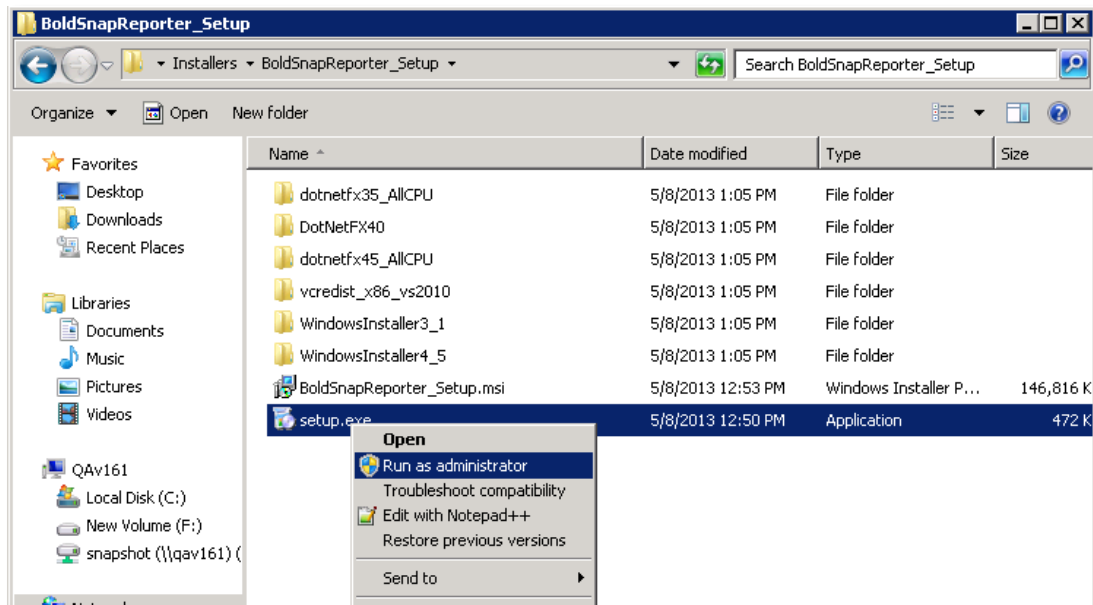
Perform the following steps to install SnapReporter:

Note: You must install SnapReporter on the same server you have installed Manitou.

1. Run the **SnapReporter.exe** file that has been provided to you in the **BoldSnapReporter_Setup** folder.

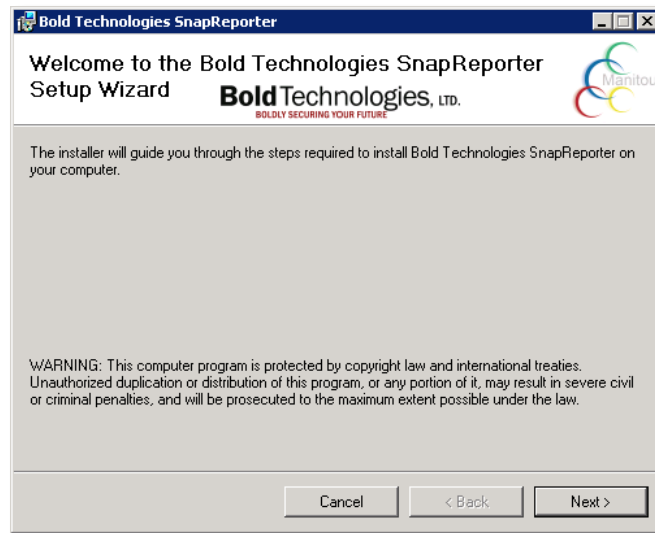
The **BoldSnapReporter_Setup** screen appears.

2. Right-click the **Setup.exe** file and then select **Run as administrator** from the shortcut menu as displayed in the following screenshot:



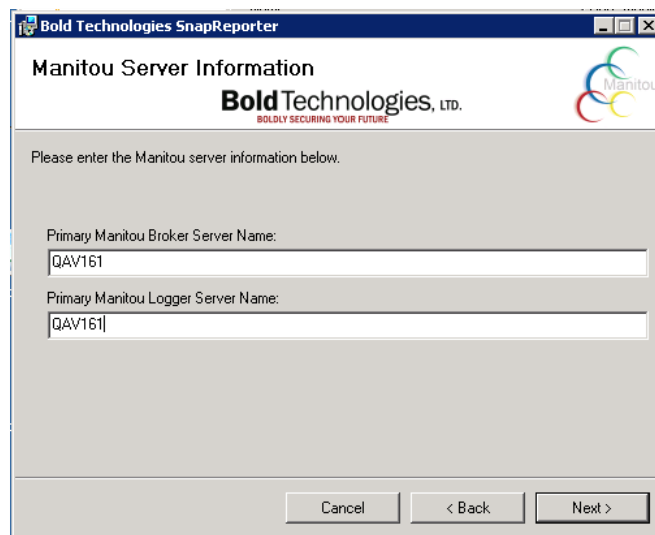
The **Bold Technologies SnapReporter** installer displays as shown in the following screenshot:

Note: If you did not have Microsoft .Net Framework 4 and C++ 2010 Runtime Libraries (x86) installed prior to starting the SnapReporter installation, the system will prompt you to install it now. After you install Microsoft .Net Framework 4 and C++ 2010 Runtime Libraries (x86), you must reboot your system before continuing with the SnapReporter installation.



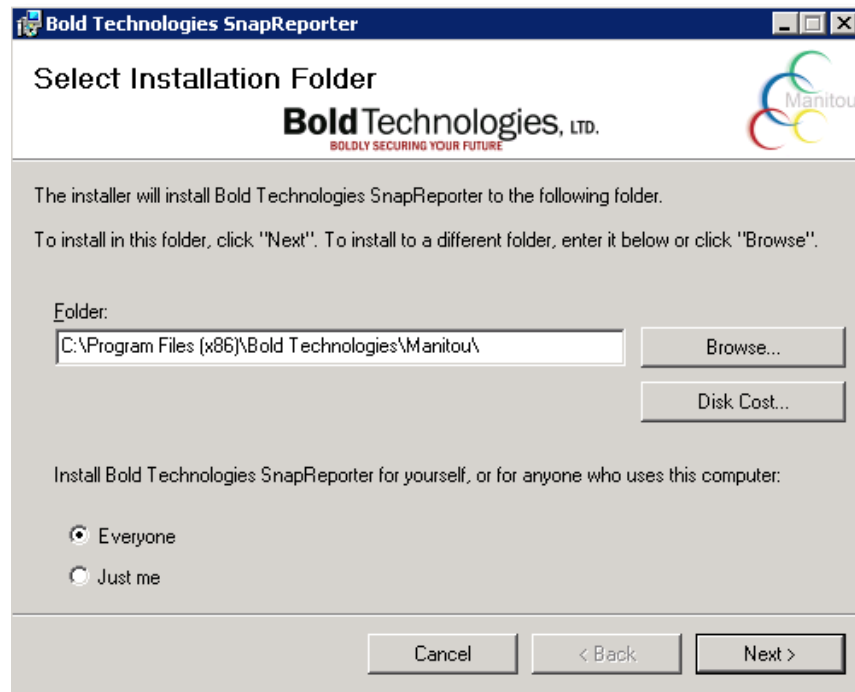
3. Click **Next**.

The system prompts you to type names for your Broker Server and Logger Server as displayed in the following screenshot:



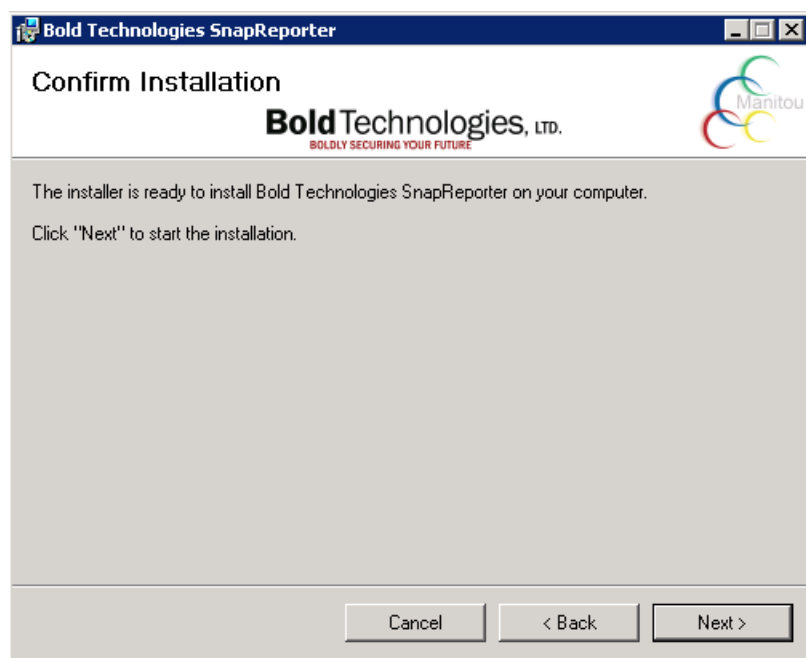
4. Type the names of your Broker and Logger Servers in the appropriate boxes.
5. Click **Next**.

The system prompts you to designate a folder in which SnapReporter will be installed as displayed in the following screenshot:



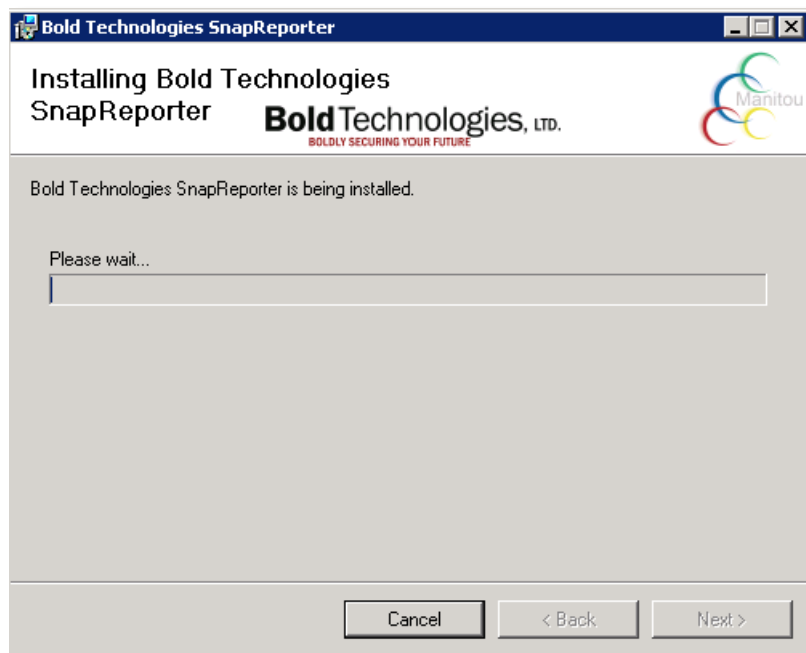
6. Type or select a folder in which to install SnapReporter.
7. Select the **Everyone** option if you want SnapReporter to be available to everyone who uses your computer. Select the **Just me** option if you want SnapReporter to be available to you only.
8. Click **Next**.

The following screen appears:



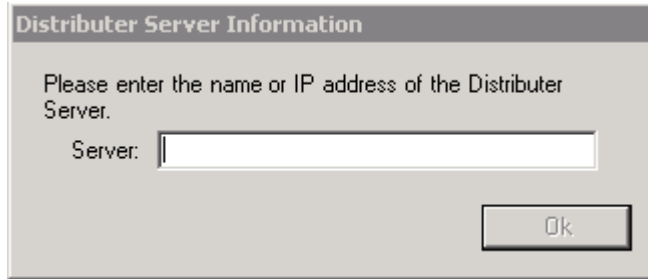
9. Click **Next** to start the SnapReporter installation.

The following screen appears:

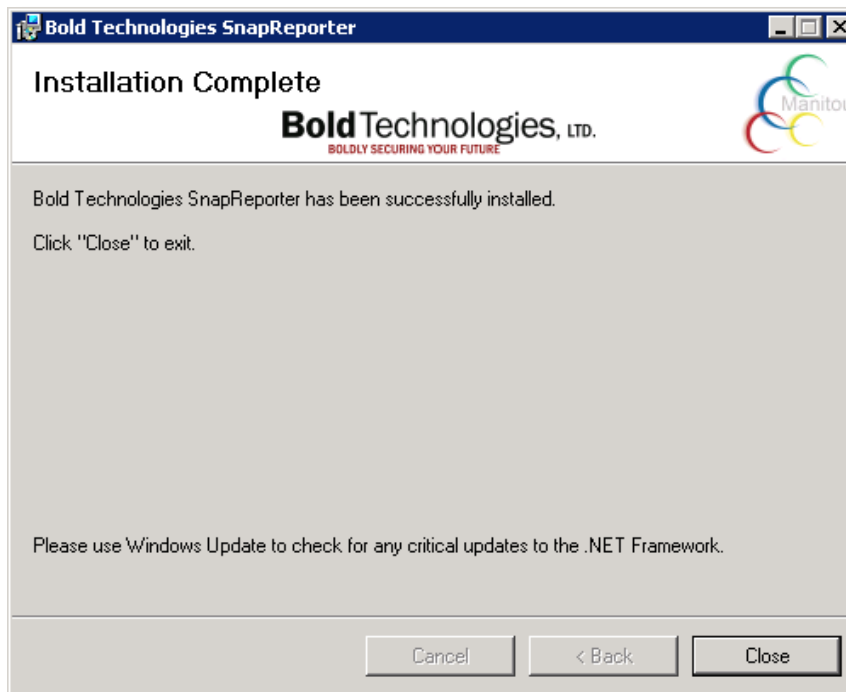


Note: The SnapReporter installation might take a few minutes.

10. If your machine does not have a distributor client set up, the system will prompt you to type the name of the server the distributor is running on as shown in the following screenshot. You would then click **OK** to continue. If the system does not prompt you to enter a distributor server, skip to the next step.



11. When the SnapReporter installation completes, the following screen appears:



12. Click **Close**.

The system places the **Bold SnapReporter** icon on your desktop as shown in the following screenshot:



Note: Until you create a data source, the system might display a message that prompts you for a “.cfg” file. If this occurs, click **Cancel**. The system will create the “.cfg” file when you save your first data source. Connecting to a data source is the next topic discussed in this guide.

Confirming the Installation

Once the SnapReporter installation is complete, you must confirm that the software is operating correctly.

Connecting a Data Source

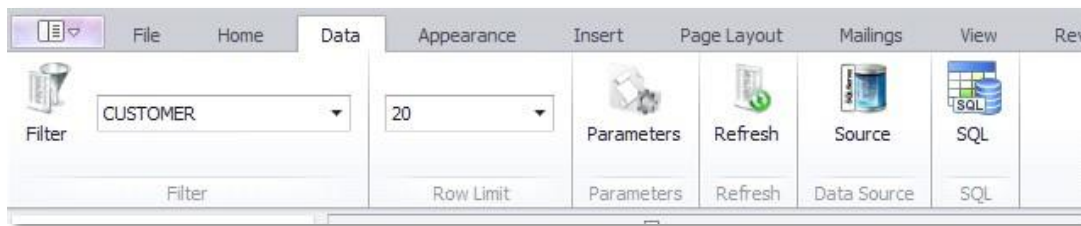
Complete the following steps to connect to a data source:

1. Double-click **Bold SnapReporter** on your desktop.

The Bold SnapReporter user interface appears.

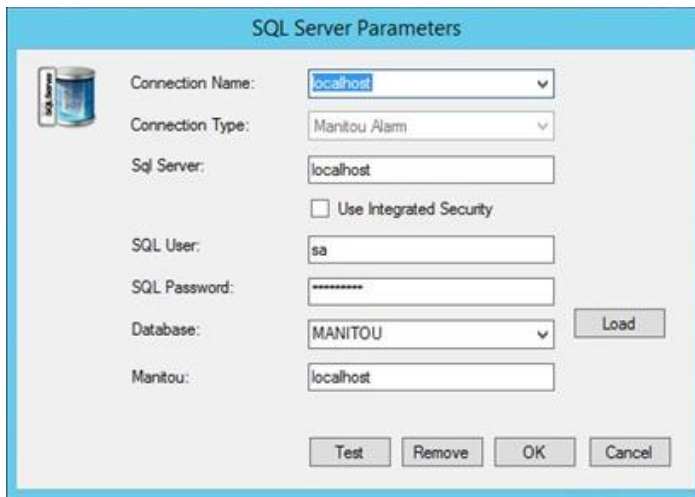
2. Click **Data** and then click **Source**.

The following screen appears:



3. Click **Parameters**.

The **SQL Server Parameters** dialog box displays as shown in the following screenshot:



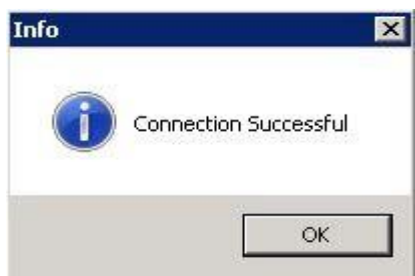
4. Enter database information into the appropriate boxes for at least one valid Manitou system from which you want to report.

IMPORTANT:

- There is no automated rollover for Snap Reports if you perform a failover and your SQL Server is on a different system than your Manitou services and SnapReporter. In such an instance, you will need to change the data source each time you perform a failover.
- If your SQL Server is on the same system as your Manitou services and SnapReporter, you can set the data source to **localhost** and the rollover should occur without issue. Please note, **localhost** is the correct selection on the server. However, on a workstation the named server should be, for example, “manitou1” or “manitou2”.

5. Type the name of the server running Manitou in the **Manitou** box.
6. Click **Test**, once you have entered the necessary database information.

The following message appears:



7. Click **OK** on the **Info** dialog box and then click **OK** on the **SQL Server Parameters** dialog box.

The SnapReporter main screen displays and you are prompted to enter your Manitou credentials. The **Data Source** section on the right side of your screen displays the data source you entered.

Note: If your computer has not previously connected to Manitou, it might be necessary for you to approve yourself as a user on the Supervisor Workstation list.

8. Once SnapReporter connects to the data source and you have entered your Manitou credentials, a list of fields displays on the right side of the screen as shown in following screenshot:

