



InstantConnect User Guide

Table of Contents

- InstantConnect Overview3**
- Setting Up InstantConnect in the MediaGateway 23**
 - Importing the InstantConnect Menu3
 - Adding an InstantConnect Line Driver in the MediaGateway 2.....6
- Configuring InstantConnect in Manitou..... 11**
 - Adding InstantConnect as a Manitou Audio Type11
 - Adding an InstantConnect Transmitter Type and Programming Commands13
 - Adding an InstantConnect Transmitter in Manitou19
- Activating your Line Driver in the MediaGateway 222**

InstantConnect Overview

The Bold InstantConnect module enables any phone to become an alarm system. When a telephone call comes into a Central Station, InstantConnect uses the Caller ID to generate an alarm in Manitou. When a Manitou Operator picks up the alarm, the voice call is automatically routed to that Operator. InstantConnect uses Caller ID in place of a Transmitter ID, so no Receiver is required.

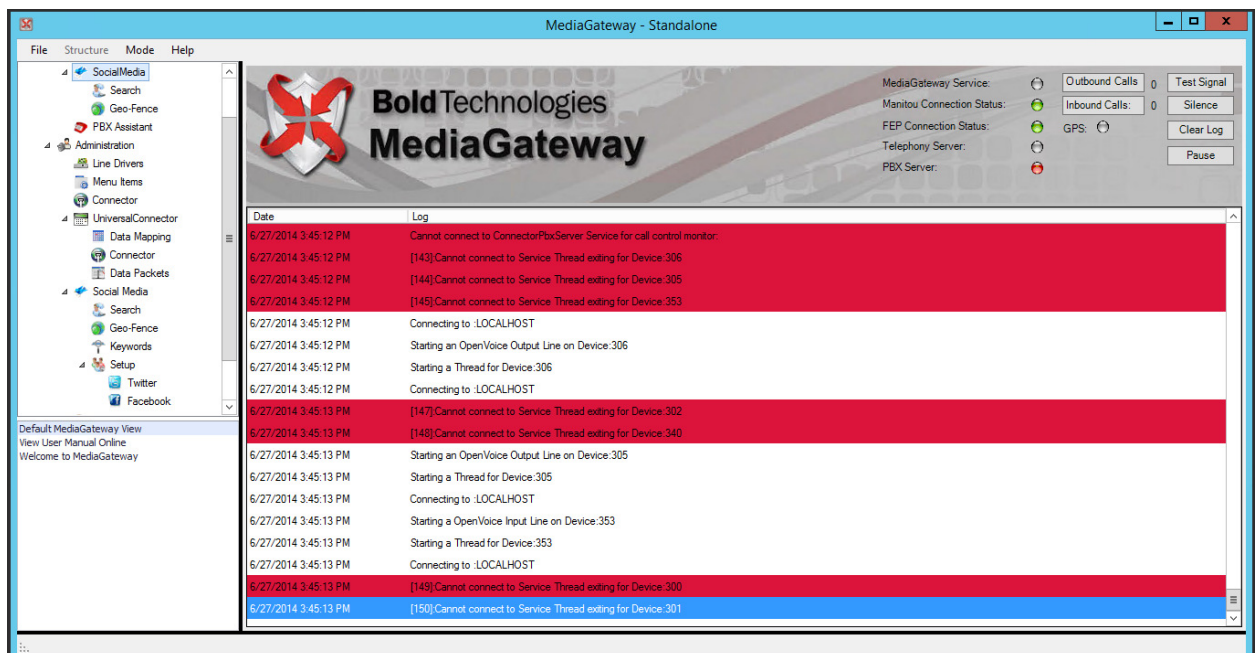
InstantConnect and all other MediaGateway 2 components require proper licensing through Bold Technologies. If you are not yet licensed for a MediaGateway 2 component you would like to access, please contact Bold Support to discuss your particular situation.

Setting Up InstantConnect in the MediaGateway 2

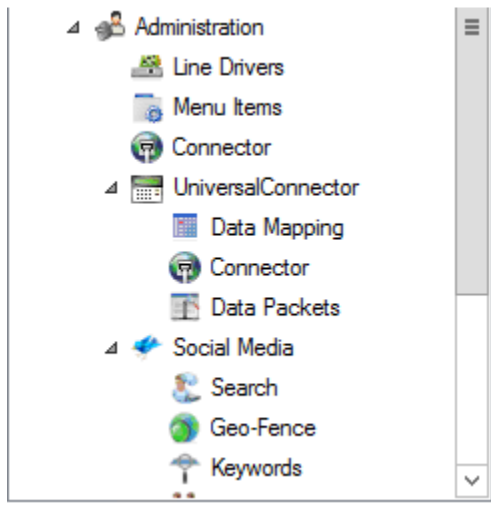
Importing the InstantConnect Menu

In order to set up InstantConnect in the MediaGateway 2, you must import an InstantConnect menu. Perform the following steps to import an InstantConnect menu:

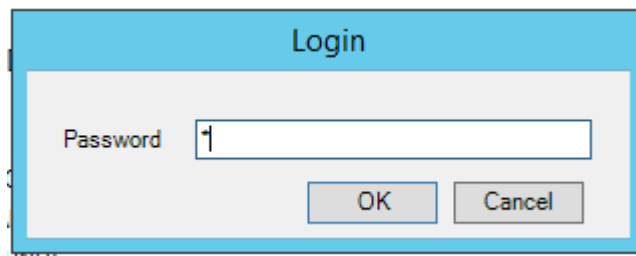
1. Open the MediaGateway 2.
Result: the following window displays:



2. Select “Menu Items” from the Navigation Tree as shown in the following screenshot:

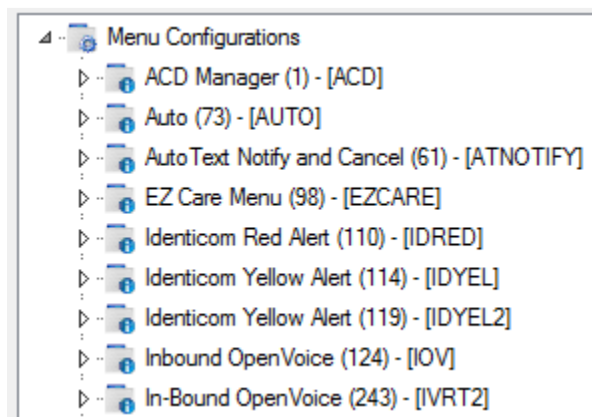


Result: the following “Login” window displays:

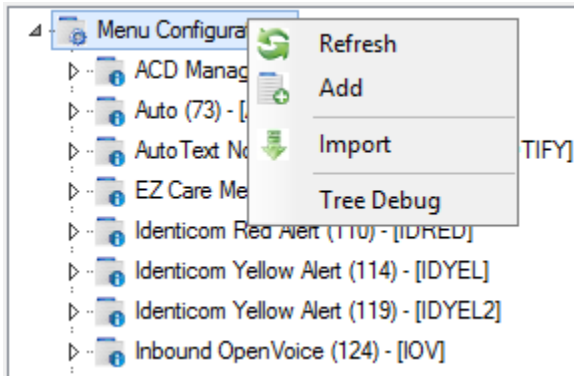


3. Enter your password, and click “OK”.

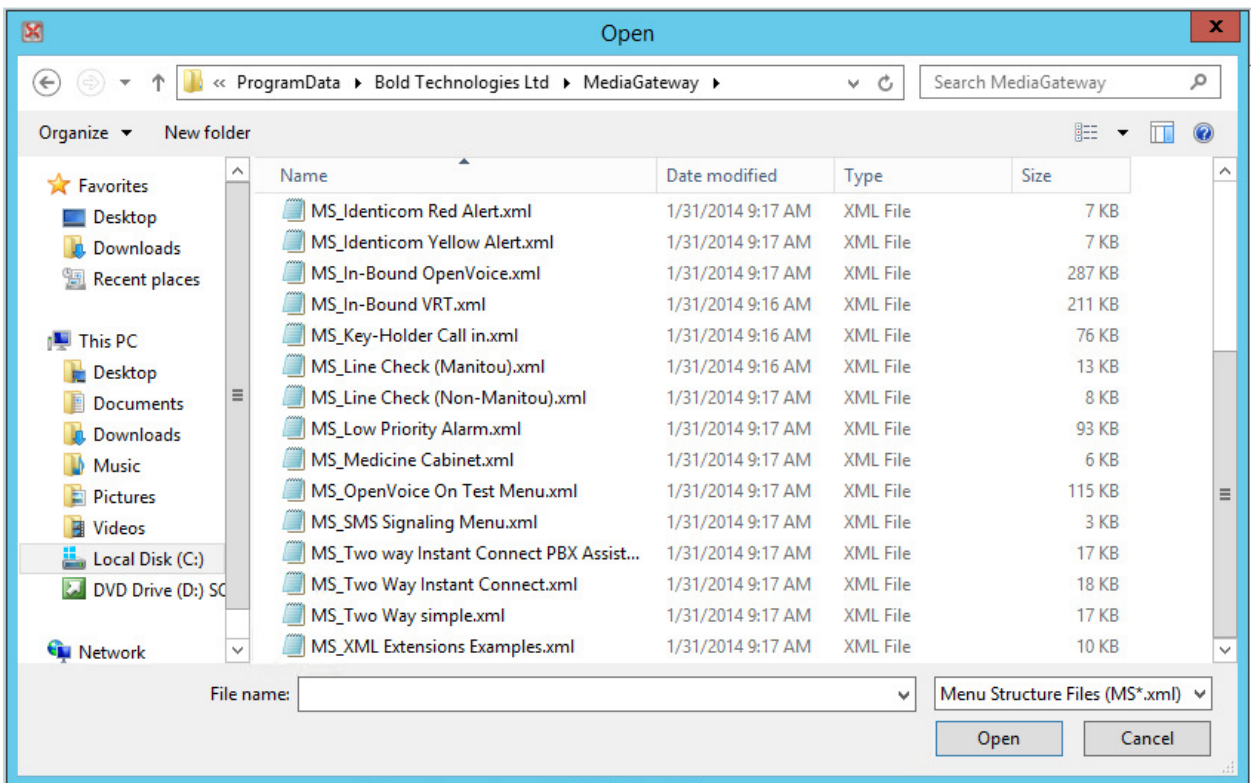
Result: the Menu Items window displays as shown in the following screenshot:



4. Right-click the “Menu Configurations” node, and select “Import” as shown in the following screenshot:

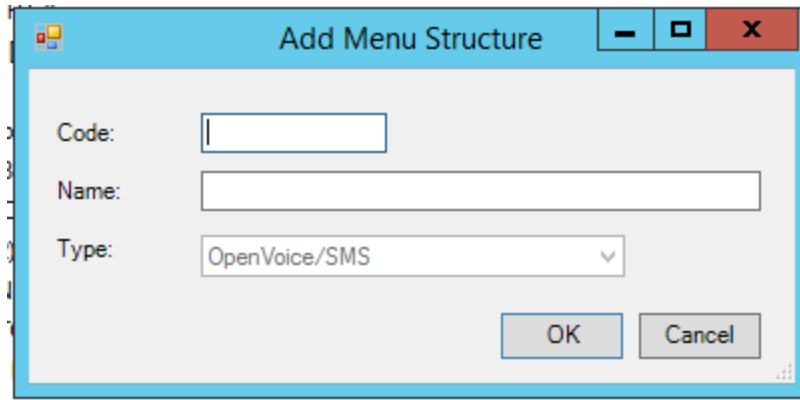


Result: the “Open” window displays as shown in the following screenshot:



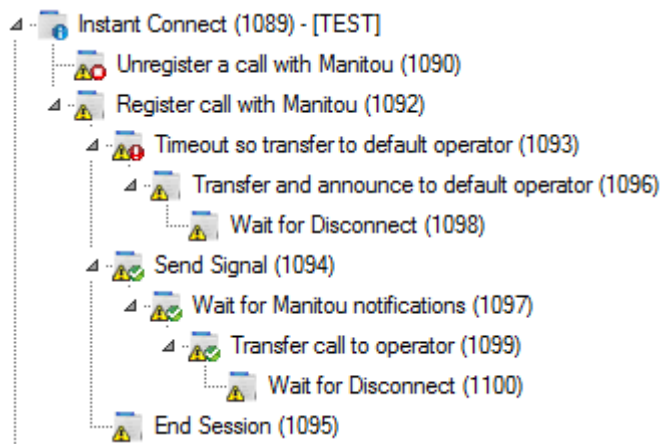
5. Select “MS_Two Way Instant Connect.xml”, and click “Open”.

Result: the “Add Menu Structure” window displays as shown in the following screenshot:



6. Enter a code and name into the appropriate fields, and click “OK”.

Result: the InstantConnect menu you imported now displays in the menu structure as shown in the following screenshot:

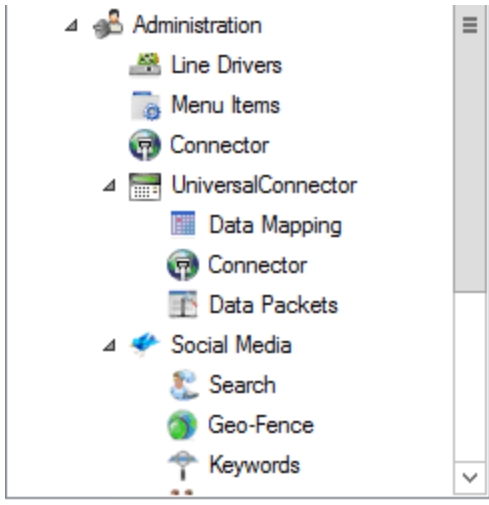


7. Modify the menu structure, as necessary.

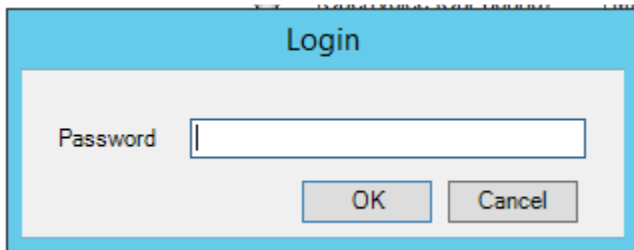
Adding an InstantConnect Line Driver in the MediaGateway 2

In order to set up InstantConnect in the MediaGateway 2, you must add an InstantConnect Line Driver. Perform the following steps to add a Line Driver in the MediaGateway 2:

1. Open the MediaGateway 2.
2. Select “Line Drivers” as shown in the following screenshot:



Result: the “Login” window displays as shown in the following screenshot:



3. Enter your password, and click “OK”.

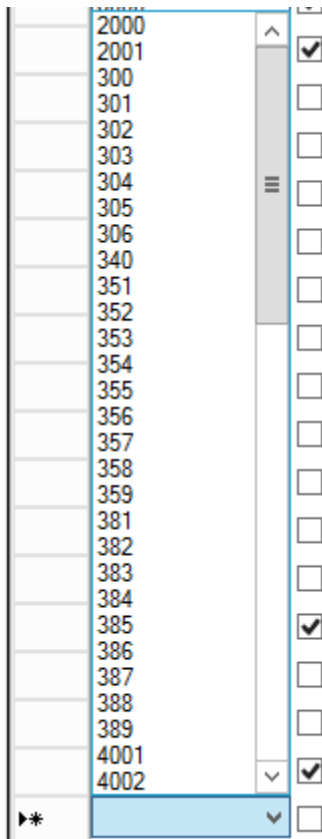
Result: the Line Drivers window displays as shown in the following screenshot:

	Line Driver	Description	Status	Line Function	Properties	Driver
	2000	<input checked="" type="checkbox"/>		OpenVoice (Out-Bound)		
	2001	<input type="checkbox"/> Receiver line 2		Internal Transfer Line	STATIONID=1	
	300	<input checked="" type="checkbox"/> System I Line 1		TwoWayPLUS	MENU=TWOWAYDIRECT,LINEID=8,FEP=1,RECEIVER=65,LINE=999,USEDNIS=1,TYPE=0	
	301	<input checked="" type="checkbox"/> System I Line 2		TwoWayPLUS	LINEID=888,FEP=1,RECEIVER=65,LINE=999,TYPE=0,USEDNIS=1,MENU=TWOWAYDIR...	
	302	<input checked="" type="checkbox"/>		TwoWayPLUS	MENU=ELEV1,LINEID=2,FEP=1,RECEIVER=1,LINE=2,TYPE=1,USEDNIS=0	
	303	<input type="checkbox"/>		TwoWayPLUS	MENU=TWIPA,LINEID=3,FEP=1,RECEIVER=1,LINE=3,TYPE=1,USEDNIS=0	
	304	<input type="checkbox"/>		TwoWayPLUS	MENU=TWIPA,LINEID=4,FEP=1,RECEIVER=1,LINE=4,TYPE=1,USEDNIS=0	
	305	<input checked="" type="checkbox"/>		OpenVoice (Out-Bound)	MENU=OVTEST2,BUSYRETRIES=3,PVD=0	

4. Click the arrow on the last Line Driver line (denoted by an asterisk) as shown in the following screenshot:



Result: a list of available Line Drivers displays as shown in the following screenshot:



5. Select the Line Driver you want to add.

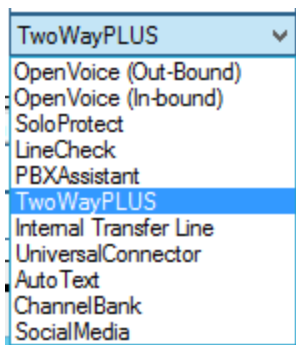
Result: the Line Driver you selected now displays as shown in the following screenshot:



6. Click in the "Description" field, and enter a description as shown in the following screenshot:



7. Click the arrow in the Line Function field for the Line Driver you are creating, and select "TwoWayPLUS" as shown in the following screenshot:



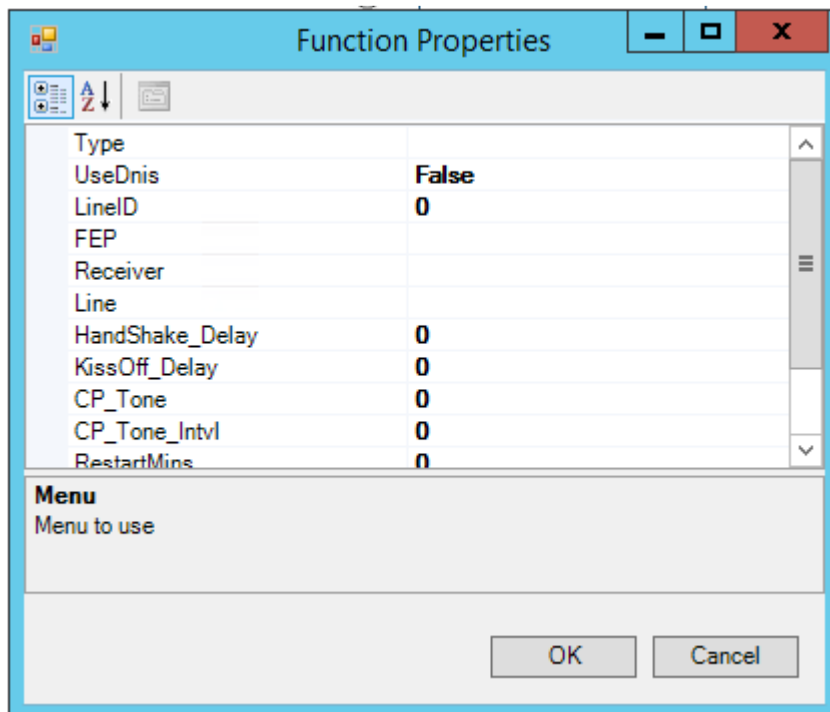
Result: TwoWayPLUS now displays as your select Line Function as shown in the following screenshot:



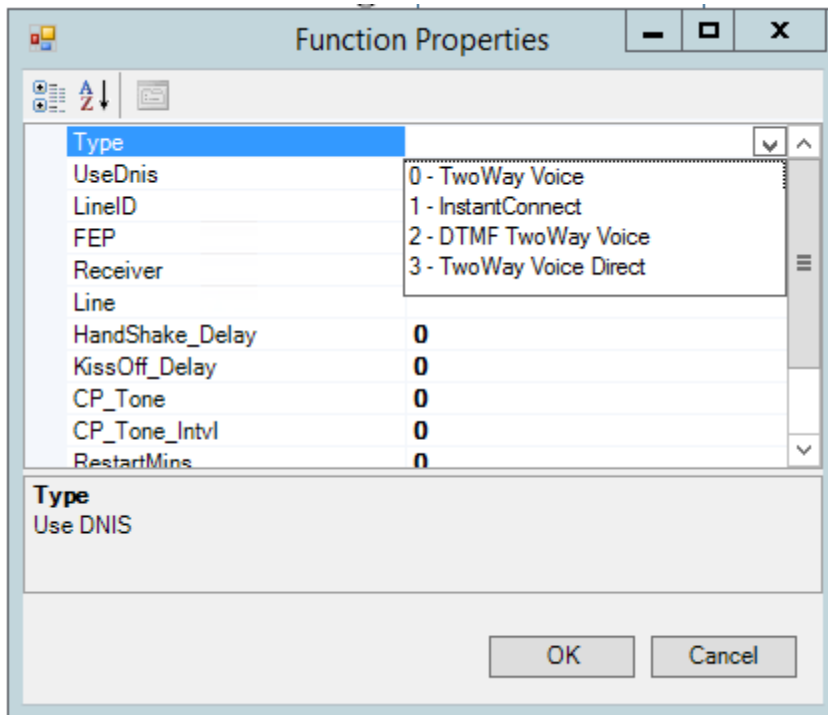
8. Click in the “Properties” column for the line on which you are creating your new Line Driver, then right-click in the field and select “Properties” as shown in the following screenshot:



Result: the “Function Properties” window displays as shown in the following screenshot:



9. Click at the right edge of the “Type” field until a dropdown menu displays as shown in the following screenshot:



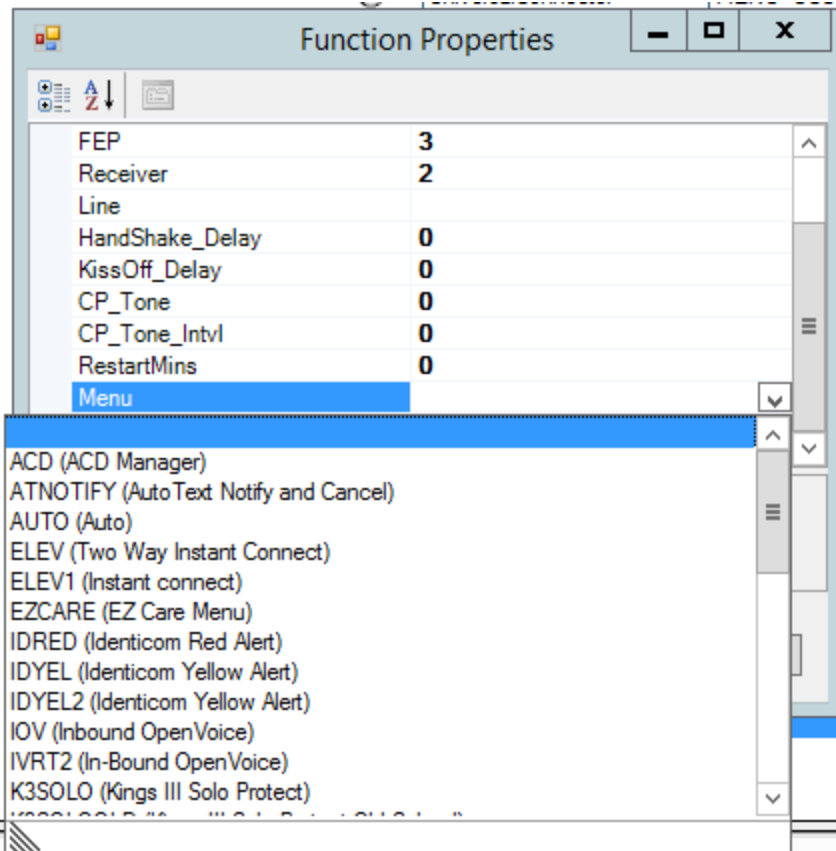
10. Select "1 - InstantConnect".

Result: the dropdown menu closes, and a "1" displays in the field to reflect your InstantConnect selection.

11. Click in the "FEP" field, and enter a number to indicate the FEP you want to use for InstantConnect.

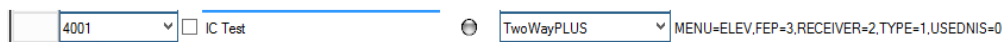
12. Click in the "Receiver" field, and enter a number to indicate the Receiver you want to use for InstantConnect.

13. Click at the right edge of the "Menu" field until a dropdown menu displays, and then select "ELEV" as shown in the following screenshot:



14. Click “OK”.

Result: the properties you selected now display in the “Properties” field as shown in the following screenshot:



Note: depending on your specific configuration, defining additional menu properties in the “Function Properties” window may be required.

15. Click “Save”.

Configuring InstantConnect in Manitou

You have nearly completed setting up InstantConnect in the MediaGateway 2. Before you can finish, however, you must complete the InstantConnect setup in Manitou.

Adding InstantConnect as a Manitou Audio Type

Perform the following steps to add InstantConnect as a Manitou Audio Type:

1. Open the Manitou Supervisor Workstation.
2. Navigate to the Maintenance menu, and then select “Setup” and “Audio Types”.
Result: the “Audio Types” form displays as shown in the following screenshot:

	Function Description	Digits	Listen Only	Update	Initial Status	Hangup
▶	Listen	3	<input checked="" type="checkbox"/>	<input checked="" type="checkbox"/>	<input checked="" type="checkbox"/>	<input type="checkbox"/>
	Talk	1	<input type="checkbox"/>	<input checked="" type="checkbox"/>	<input type="checkbox"/>	<input type="checkbox"/>
	Extend	7	<input type="checkbox"/>	<input checked="" type="checkbox"/>	<input type="checkbox"/>	<input type="checkbox"/>
	Hangup	9	<input checked="" type="checkbox"/>	<input type="checkbox"/>	<input type="checkbox"/>	<input checked="" type="checkbox"/>
*			<input type="checkbox"/>	<input type="checkbox"/>	<input type="checkbox"/>	<input type="checkbox"/>

3. Click “Edit”, and then click “Add”.
Result: the “Add Audio Type” window displays as shown in the following screenshot:

4. Enter a code in the “Audio Type Code:” field.
5. Enter a description into the “Description:” field, and click “OK”.

Result: the new Audio Type you created now displays as the selected item on the form as shown in the following screenshot:

Audio Type Details						
	Function Description	Digits	Listen Only	Update	Initial Status	Hangup
*			<input type="checkbox"/>	<input type="checkbox"/>	<input type="checkbox"/>	<input type="checkbox"/>

6. Click “**Save**”.

Adding an InstantConnect Transmitter Type and Programming Commands

Perform the following steps to add an InstantConnect Transmitter Type and programming commands:

1. Open the Manitou Operator Workstation
2. Navigate to the Maintenance menu, and select “Transmitter Types”.


Result: the “Transmitter Type” menu displays as shown in the following screenshot:

3. Select the “Event Monitoring” node in the Navigation Tree.
4. Click “Edit”, and then click “Add”.

Result: the “Transmitter Type” window displays as shown in the following screenshot:

5. Enter a type into the “Type:” field.
6. Enter a description into the “Description:” field, and click “OK”.
7. The “Transmitter Type:” window closes, and the new Transmitter Type you created displays as the selected item on the “Transmitter Type” form as shown in the following screenshot:

Transmitter Type

 Transmitter Type: IC


System Type: Event Monitoring

Description: InstantConnect

Protocol Type:

Reverse Cmd Protocol: None


Transmitter Input ID



	Base	Minimum	Maximum	Separator
Group 1 Value Range:	<input checked="" type="radio"/> Decimal <input type="radio"/> Hexadecimal	<input type="text"/>	<input type="text"/>	<input type="text"/>
Group 2 Value Range:	<input checked="" type="radio"/> Decimal <input type="radio"/> Hexadecimal	<input type="text"/>	<input type="text"/>	<input type="text"/>
Group 3 Value Range:	<input checked="" type="radio"/> Decimal <input type="radio"/> Hexadecimal	<input type="text"/>	<input type="text"/>	

TX Input ID:

Attributes



☐ Audio Capable
☐ Create Call Session (No Listen-In)
☐ Drop Listen-In if no Alarm


Audio Type:

☐ Video Capable
☐ Raw Event Programming
☐ Monitored Transmission Path
☐ Generate L-T-T Only When Closed

Video Type:

8. Select the “Audio Capable” and the “Create Call Session (No Listen-In)” checkboxes in the “Attributes” area of the form.
9. Select the Audio Type you previously created from the “Audio Type:” dropdown menu.
10. Your entries on the “Transmitter Type” form should now match the following screenshot:

Transmitter Type



 Transmitter Type: IC
 System Type: Event Monitoring
 Description: InstantConnect
 Protocol Type:
 Reverse Cmd Protocol: None

Transmitter Input ID

	Base	Minimum	Maximum	Separator
Group 1 Value Range:	<input checked="" type="radio"/> Decimal <input type="radio"/> Hexadecimal	<input type="text"/>	<input type="text"/>	<input type="text"/>
Group 2 Value Range:	<input checked="" type="radio"/> Decimal <input type="radio"/> Hexadecimal	<input type="text"/>	<input type="text"/>	<input type="text"/>
Group 3 Value Range:	<input checked="" type="radio"/> Decimal <input type="radio"/> Hexadecimal	<input type="text"/>	<input type="text"/>	

TX Input ID:

Attributes


☒ Audio Capable Audio Type: InstantConnect
☒ Create Call Session (No Listen-In)
☐ Drop Listen-In if no Alarm
☐ Video Capable Video Type:
☐ Raw Event Programming
☐ Monitored Transmission Path
☐ Generate L-T-T Only When Closed

Note: depending on your specific configuration, defining additional properties on the “Transmitter Type” window may be required.

11. Select the “Programming” Tab at the bottom of the form as shown in the following screenshot:

Result: the “Transmitter Programming” form displays as shown in the following screenshot:

Transmitter Programming

	Input				Event	Description	Output				Specific Processing	
	DES ▼	Area	Zone	Sensor			Area	Zone	Sensor	Point ID	Commands	Help
*												

12. Click at the right edge of the “DES” field, and select “*PA” as shown in the following screenshot:

Input				
DES ▼	Area	Zone	Sensor	Event
*PA				
Event	Description			
*OL	Late Open			
*ON	On-line			
*OR	Re-Open			
*OU	Unscheduled Open			
*OX	Unexpected Open			
*P	Force Arm			
*PA	Panic Alarm			
*PLL	polling loss			

13. Click in the “Area” field.

Result: several fields populate as shown in the following screenshot:

Input					Output				
DES ▼	Area	Zone	Sensor	Event	Description	Area	Zone	Sensor	
*PA	*	*	*			=	=	=	

14. Click at the right edge of the “Event” field until a dropdown menu displays, and then select “*PA” from the list as shown in the following screenshot:

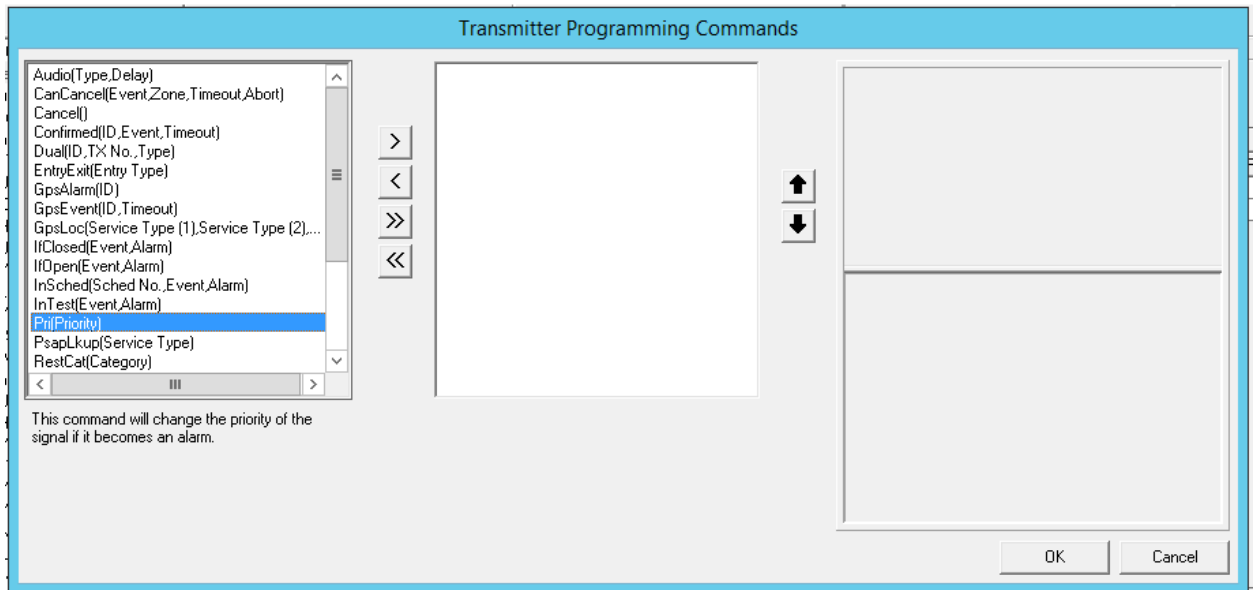
Event	Description	Area	Zone	Sensor
		=	=	=
Event	Description			
*PA	Panic Alarm			
*PLL	polling loss			
*PLR	polling restore			
*Q	Unauthorized			
*R	Restore			
*RA	Restore All			
*RB	Bell Restore			
*RO	Restore Overdue			

Input				Output						Specific Pr
DES ▼	Area	Zone	Sensor	Event	Description	Area	Zone	Sensor	Point ID	Commands
*PA	*	*	*	*PA	Panic Alarm	=	=	=		

15. Click at the right edge of the “Commands” field until an ellipsis menu displays as shown in the following screenshot:

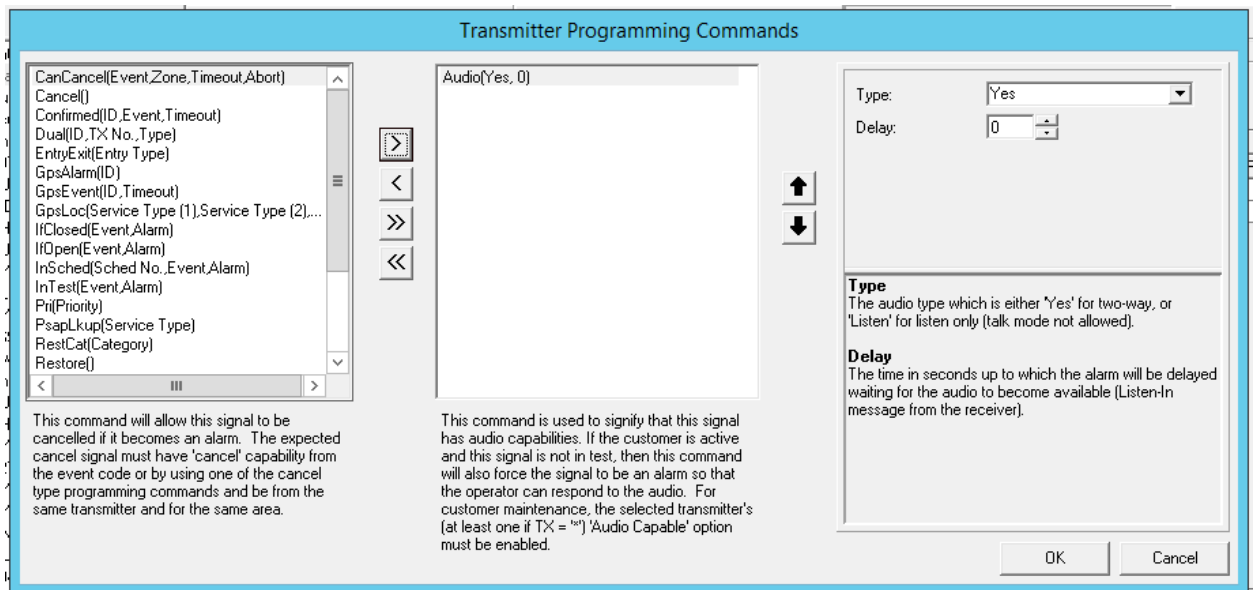
Commands
...

Result: the “Transmitter Programming Commands” window displays as shown in the following screenshot:



16. Select “Audio(Type,Delay)”, and then click the right arrow icon.

Result: the “Transmitter Programming Commands” form now displays as shown in the following screenshot:



17. Click “OK”.

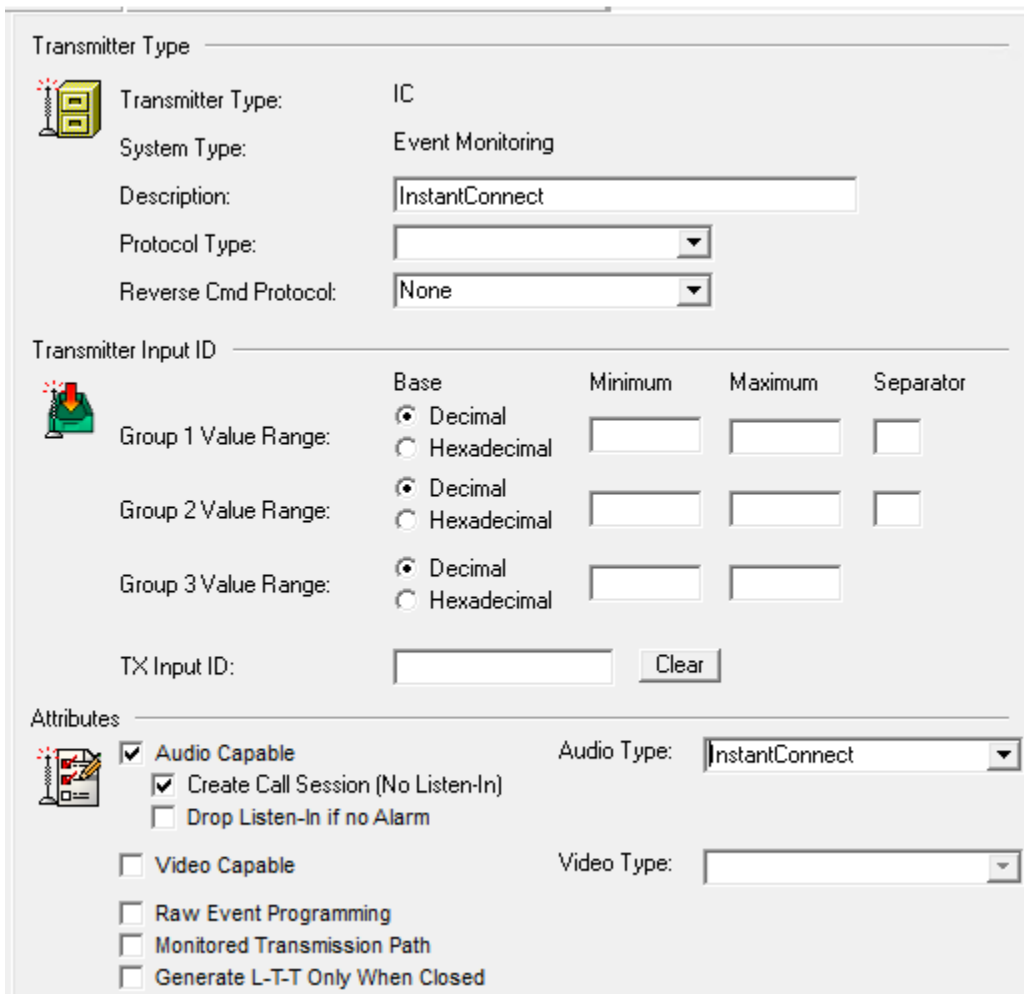
Result: the programming line you created should now display as shown in the following screenshot:

Input				Output						Specific Pr
DES ▼	Area	Zone	Sensor	Event	Description	Area	Zone	Sensor	Point ID	Commands
*PA	*	*	*	*PA	Panic Alarm	=	=	=		Audio(Yes, 0) ...

18. Click the “Transmitter Types” Tab.

Result: the “Programming” Tab closes, and the system returns you to the “Transmitter Types” form.

19. Your entries on the “Transmitter Type” form should now match the following screenshot:



Note: depending on your specific configuration, defining additional properties on the “Transmitter Type” window may be required.

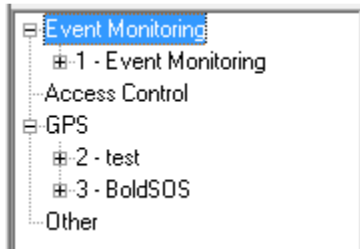
20. Click “Save”.

Adding an InstantConnect Transmitter in Manitou

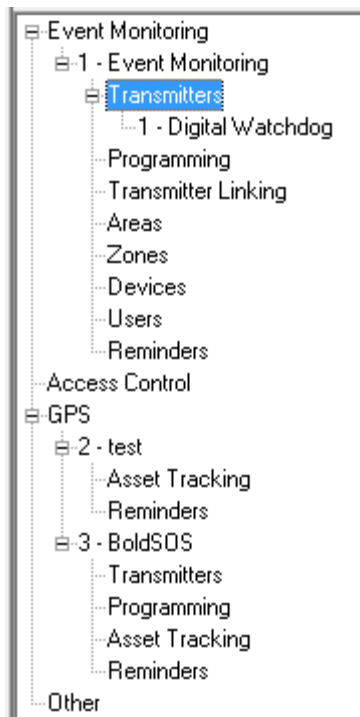
Perform the following steps to add an InstantConnect Transmitter in Manitou:

1. Open the Manitou Operator Workstation.
2. Open the Customer record to which you want to add an Event Monitoring System.
3. Click “Systems” from the Jump To menu.

Result: the following window displays:

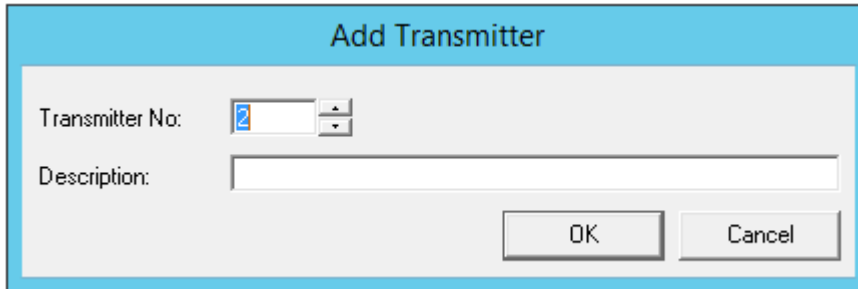


4. Expand the “Event Monitoring” node, and select “Transmitters” as shown in the following screenshot:



5. Click “Edit”, and then click “Add”.

Result: the “Add Transmitter” window displays as shown in the following screenshot:



Add Transmitter

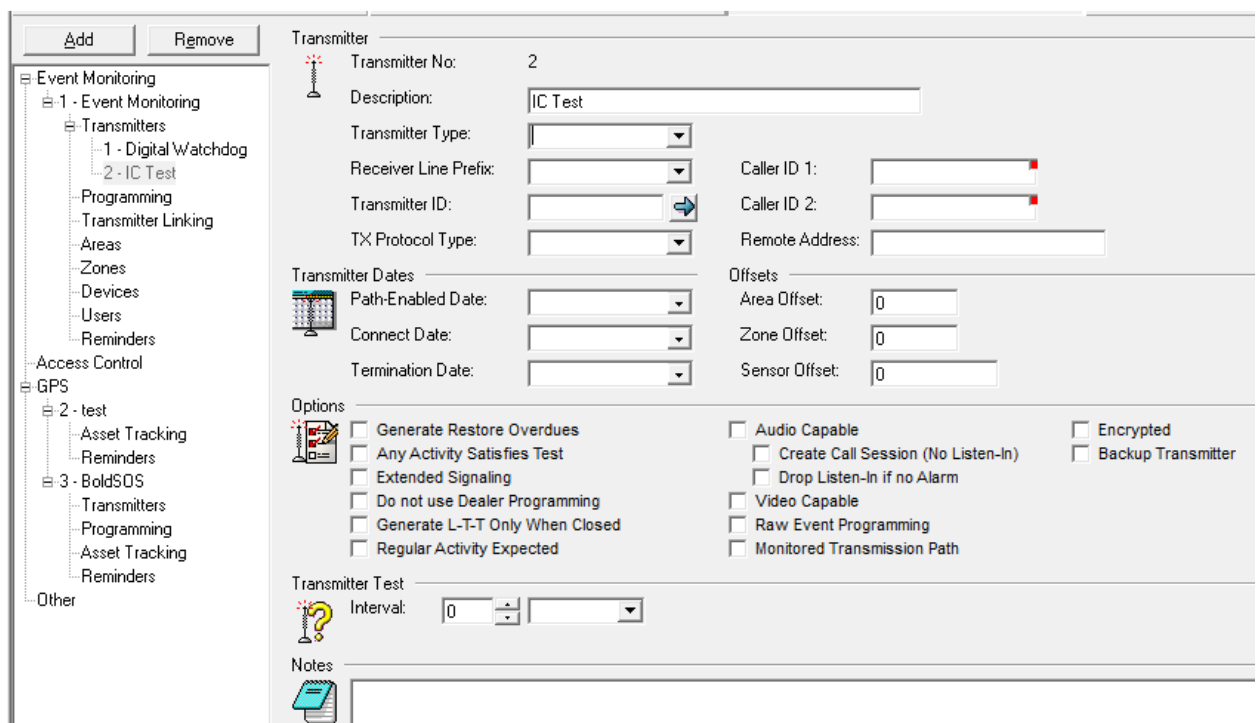
Transmitter No:

Description:

OK Cancel

6. Enter a description into the “Description” field, and click “OK”.

Result: the Transmitter you just created displays as the selected item on the form as shown in the following screenshot:



The screenshot shows the main application window with a sidebar on the left and a main configuration area on the right. The sidebar has a tree view with categories like Event Monitoring, GPS, and Other. The main area is titled 'Transmitter' and contains the following fields and sections:

- Transmitter No:** 2
- Description:** IC Test
- Transmitter Type:** [Dropdown menu]
- Receiver Line Prefix:** [Dropdown menu]
- Transmitter ID:** [Text field]
- TX Protocol Type:** [Dropdown menu]
- Caller ID 1:** [Text field]
- Caller ID 2:** [Text field]
- Remote Address:** [Text field]
- Transmitter Dates:**
 - Path-Enabled Date:** [Calendar icon]
 - Connect Date:** [Calendar icon]
 - Termination Date:** [Calendar icon]
- Offsets:**
 - Area Offset:** 0
 - Zone Offset:** 0
 - Sensor Offset:** 0
- Options:**
 - ☐ Generate Restore Overdues
 - ☐ Any Activity Satisfies Test
 - ☐ Extended Signaling
 - ☐ Do not use Dealer Programming
 - ☐ Generate L-T-T Only When Closed
 - ☐ Regular Activity Expected
 - ☐ Audio Capable
 - ☐ Create Call Session (No Listen-In)
 - ☐ Drop Listen-In if no Alarm
 - ☐ Video Capable
 - ☐ Raw Event Programming
 - ☐ Monitored Transmission Path
 - ☐ Encrypted
 - ☐ Backup Transmitter
- Transmitter Test:**
 - Interval:** 0 [Dropdown menu]
- Notes:** [Text area]

7. Select the Transmitter Type you created earlier from the “Transmitter Type:” dropdown menu.
8. Select a Receiver Line Prefix from the “Receiver Line Prefix” dropdown menu, or select the default option.
9. Enter the phone number from which the Customer will be calling into the Central Station in the “Transmitter ID:” field.
10. Select the “Audio Capable” and the “Create Call Session (No Listen-In)” checkboxes.
11. Your Transmitter setup should now match the following screenshot:

Transmitter

Transmitter No: 2

Description:

Transmitter Type:

Receiver Line Prefix:

Transmitter ID:

TX Protocol Type:

Caller ID 1:

Caller ID 2:

Remote Address:

Transmitter Dates

Path-Enabled Date:

Connect Date:

Termination Date:

Offsets

Area Offset:

Zone Offset:

Sensor Offset:

Options

☐ Generate Restore Overdues

☐ Any Activity Satisfies Test

☐ Extended Signaling

☐ Do not use Dealer Programming

☐ Generate L-T-T Only When Closed

☐ Regular Activity Expected

☒ Audio Capable

☒ Create Call Session (No Listen-In)

☐ Drop Listen-In if no Alarm

☐ Video Capable

☐ Raw Event Programming

☐ Monitored Transmission Path

☐ Encrypted

☐ Backup Transmitter

Transmitter Test

Interval:

Notes

12. Click **“Save”**.

Activating your Line Driver in the MediaGateway 2

Now that your Manitou setup is complete, you must return to the MediaGateway 2 Line Drivers section to activate the Line Driver you created earlier. Perform the following steps to activate your Line Driver in the MediaGateway2:

1. If you want to make the Line Driver you created active, click the checkbox next to the “Description” field as shown in the following screenshot:

☒ IC Test MENU=ELEV,FEP=3,RECEIVER=2,TYPE=1,USEDNIS=0

2. Click **“Save”**.

3. Click “Re-load & Restart all Devices” as shown in the following screenshot:

