



VideoPlus User Guide

Table of Contents

- Overview3
- Prerequisites3
- Configuring VideoPlus in Manitou3
- Adding a Field of View in VideoPlus6
- Adding a Video Route in VideoPlus..... 11
- Transferring a VideoPlus Video to another Operator 14

Overview

Manitou's VideoPlus module is a powerful expansion of the Video Control Center. It adds support for enhanced Floorplans, Video Routes, and Field of View perspective. Additionally, VideoPlus includes a new configurable Media Matrix Viewer that allows the user to rearrange videos within the grid, and to transfer videos to other Operators or a Supervisor for further review.

Prerequisites

- Manitou 1.6.1
- Bold Video Control Center module with the necessary number of video drivers
- RDP (Remote Desktop Protocol) for installation and support
- IP address for remote access
- Port opened on an FEP machine (you must specify the FEP location in the firewall)
- Cameras and other equipment set up for testing
- Licensed video module with Dedicated Micros NetVu
- Dedicated Micros NetVu on Client Workstations
- Central Station has IP address, Username, and Password
- Central Station has access to a Dedicated Micros DVR
- Customer account in Manitou with Dedicated Micros Devices and Floorplans configured

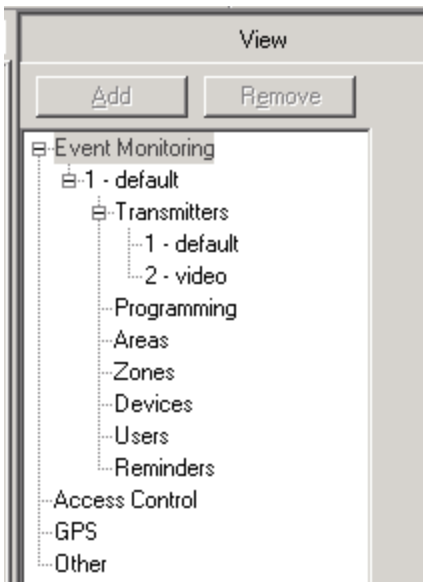
Note: refer to your video vendor's documentation for product specific requirements.

Configuring VideoPlus in Manitou

Perform the following steps to configure VideoPlus in Manitou:

1. Open the Manitou account for which you want to add VideoPlus in the Operator Workstation.
2. Confirm that the account already has Areas, Zones, and Camera Devices defined.
3. Click "**Systems**" on the Jump To menu.

Result: the Systems Navigation Tree displays as shown in the following screenshot:



4. Select “**Devices**”.

Result: the Devices form displays as shown in the following screenshot:

5. Click “**Edit**”, and then click “**Add**”.

Result: the “Add Device” window displays as shown in the following screenshot:

Add Device

Device ID:

Device Type:

Description:

Copy From:

OK Cancel

6. Enter the Device ID, and select “Video Sequence” from the “Device Type:” dropdown menu.
7. Enter a description in the “Description:” field, and click “**OK**”.

Result: the “Add Device” window closes and the system returns the user to the Devices form. A grid now displays on the bottom portion of the form as shown in the following screenshot:

	System No.	TX	Device ID	Order	Area	Zone
*						

8. Repeat the Add Device process for each Device you want to add to Manitou.
9. In the grid, enter the order in which you want the cameras to display as shown in the following example screenshot:

System No.	TX	Device ID	Order	Area	Zone
1		1	1		
1		6	2		
1		4	3		
1		3	4		
1		5	5		
1		2	6		

Note: defining the order in which cameras display is very important because it coincides with the way in which an intruder is likely to move through the physical space of your Floorplan. The more you anticipate a potential intruder’s route and include that thinking in your VideoPlus configuration, the more likely you are to catch the intruder on video.

10. On the last line of the grid, enter the Area and Zone you want to trigger the video sequence as shown in the following example screenshot:

Devices

Transmitter No:

1 - Support Entry
2 - Camera Fail
3 - Main Entry
4 - Conference Room
5 - Parking
6 - Sales Entry
TOUR - Camera Tour
VIDSEQ - Video Tour ...

Device ID: TOUR
Type: Video Sequence
Description: Camera Tour
Unit ID:
Unit Sub-ID:
Address:
Options:
Area:
Zone:

	System No.	TX	Device ID	Order	Area	Zone
▶	1		1	1		
	1		6	2		
	1		4	3		
	1		3	4		
	1		5	5		
	1		2	6		
	1	*			1	5
*						

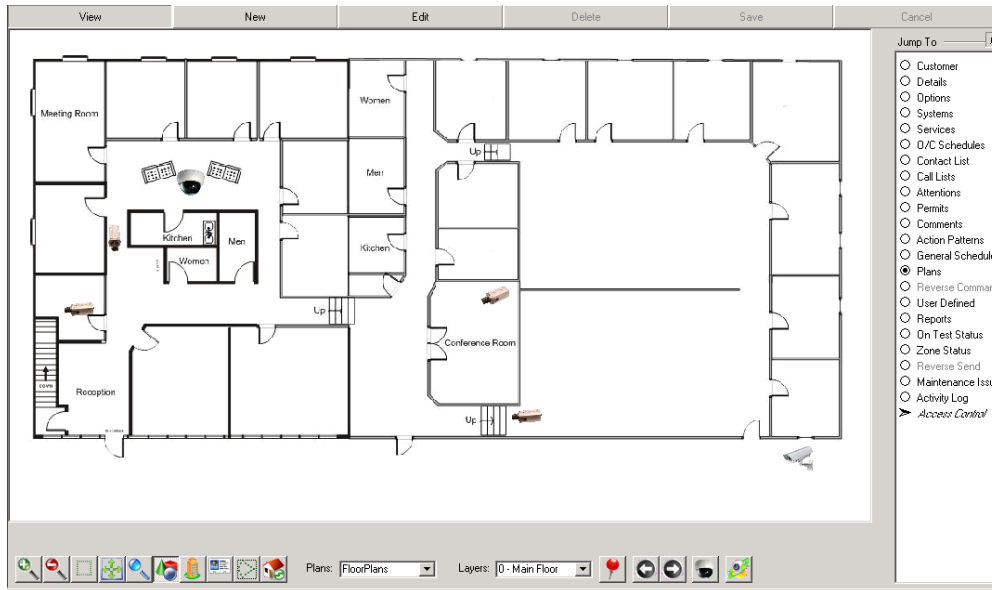
11. Click “**Save**”.

Adding a Field of View in VideoPlus

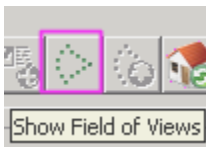
Perform the following steps to add a Field of View in VideoPlus:

1. Select “**Plans**” from the Jump To menu.

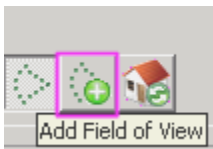
Result: the Floorplan displays as shown in the following example screenshot with your new Devices added:



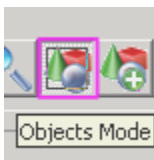
12. Drag and drop your Devices to position them where you want them on the Floorplan.
13. Click **Edit**, and then click the “Show Field of View” icon as shown in the following screenshot:



Result: the “Add Field of View” icon displays as shown in the following screenshot:



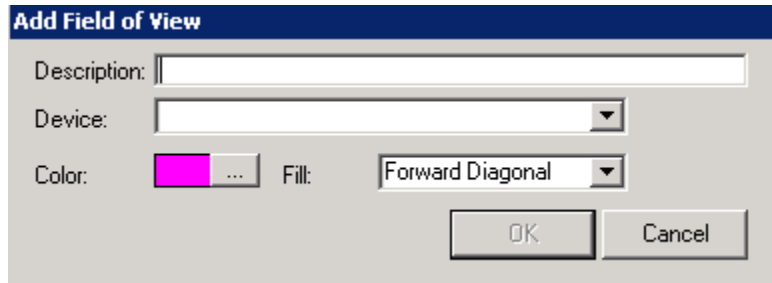
14. Click the “Add Field of View” icon.
15. Because clicking the “Add Field of View” icon hides the cameras on your Floorplan, click the “Objects Mode” icon as shown in the following screenshot:



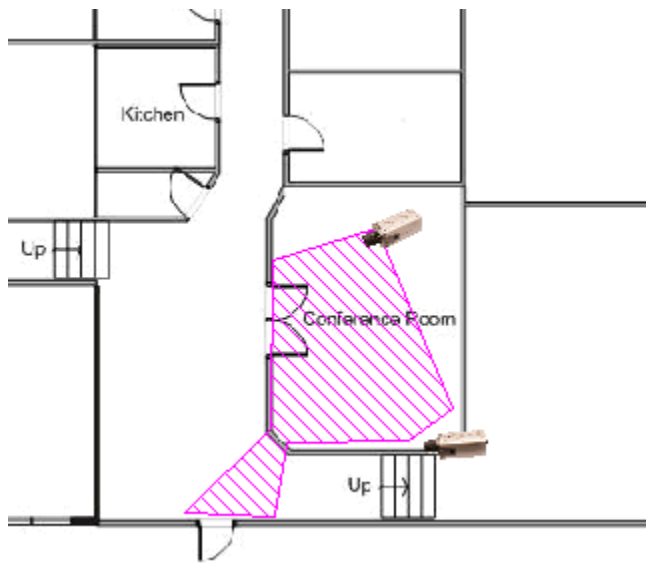
Result: the cameras on your Floorplan display.

16. Click in front of the camera for which you want to create a Field of View (but not on the camera).

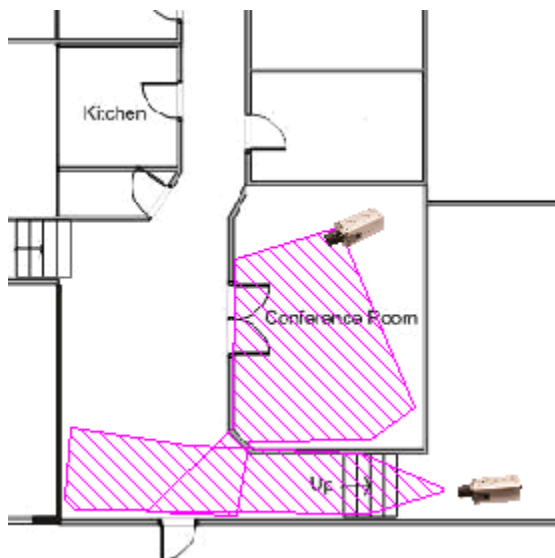
Result: the “Add Field of View” window displays as shown in the following screenshot:



17. Enter a description in the “Description” field, and select the camera for which you want to add a Field of View from the “Device” dropdown menu.
18. If you want, select a different color in which to display your Field of View from the “Color:” ellipsis button.
19. If you want, select a different fill pattern from “Fill:” dropdown menu.
20. When you are finished entering information to create your Field of View, click “**OK**”.
Result: the “Add Field of View” window closes, and a line displays between the camera and your mouse pointer on the Floorplan.
21. Move your mouse pointer to reposition the line. When you have the line positioned where you want it, click your mouse to place it.
22. Continue placing lines until your Field of View displays as you want it. The shape you create should include the area that is visible from that particular camera, and should start from the single point where the camera is located. Finish your Field of View by right-clicking your mouse on the last point.
Result: the shape you created for your Field of View displays filled as shown in the following screenshot:

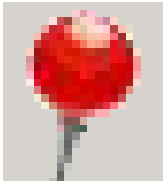


23. Add additional Fields of View for additional cameras. Complete this step even if the Fields of View overlap as displayed in the following screenshot:

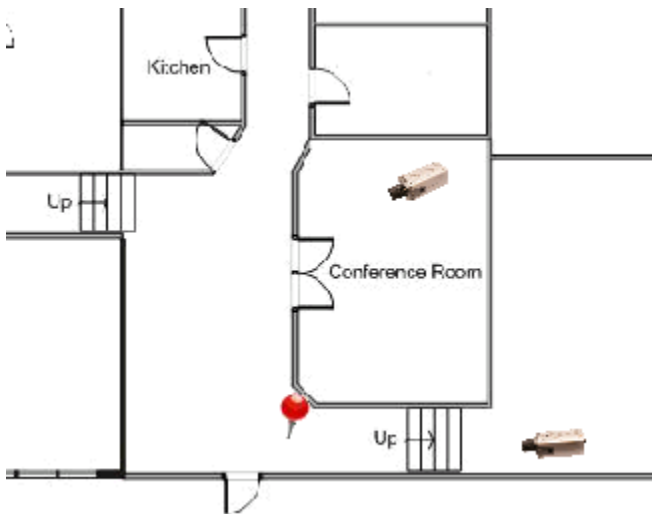


24. Complete any other Fields of View for the same Floorplan.

25. The Fields of View you created can now be used in Pin Drop Mode. To test this, close the Customer account, and then reopen it (as though you were an Operator seeing this account for the first time). Navigate to the Plans screen, and click on the red Pushpin icon at the bottom of your screen as displayed in the following screenshot:



26. Drag the Pushpin to a location on your Floorplan where you know a camera is likely to have view, and place the Pushpin as shown in the following example screenshot:



Result: the Manitou Media Matrix Viewer displays video from the cameras sharing that Field of View as shown in the following screenshot:



27. When you finish viewing the video, close the Manitou Media Matrix Viewer.

Adding a Video Route in VideoPlus

Perform the following steps to add a Video Route in VideoPlus:

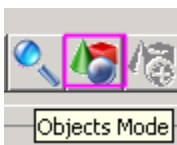
1. From the Plans screen, click **Edit**, and then click the “Video Route” icon as displayed in the following screenshot:



2. Click the “Add Video Route” icon as displayed in the following screenshot:



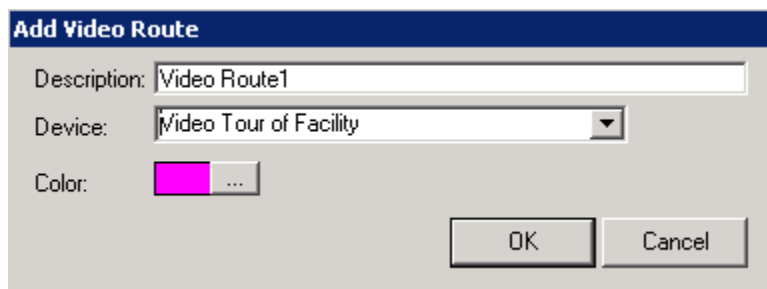
3. Because clicking the “Add Video Route” icon hides the cameras on your Floorplan, click the Objects Mode as shown in the following screenshot:



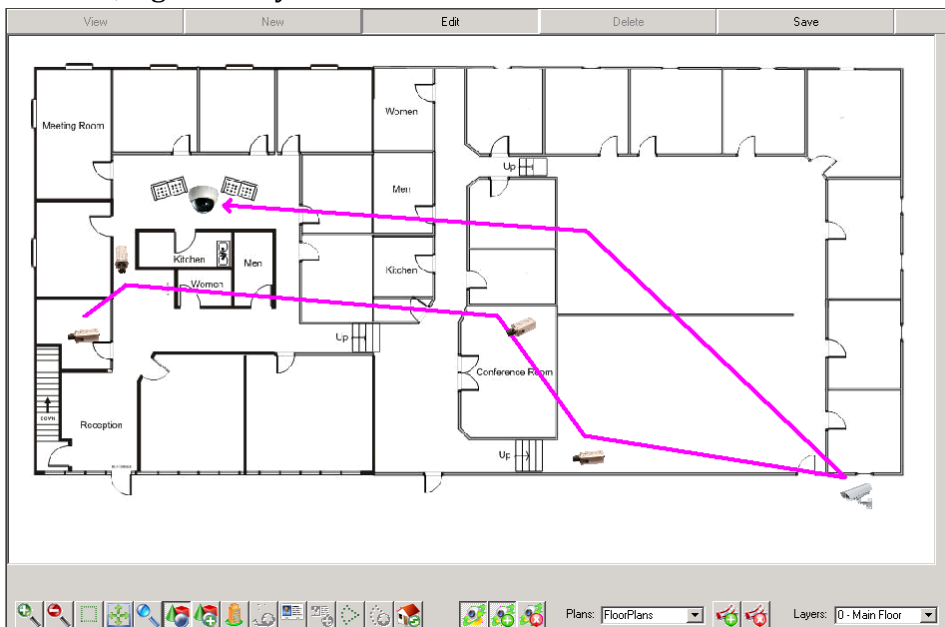
Result: the cameras on your Floorplan display.

4. Click in front of the camera for which you want to add a Route.

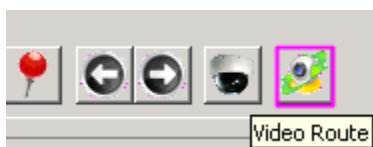
Result: the “Add Video Route” window displays as shown in the following screenshot:



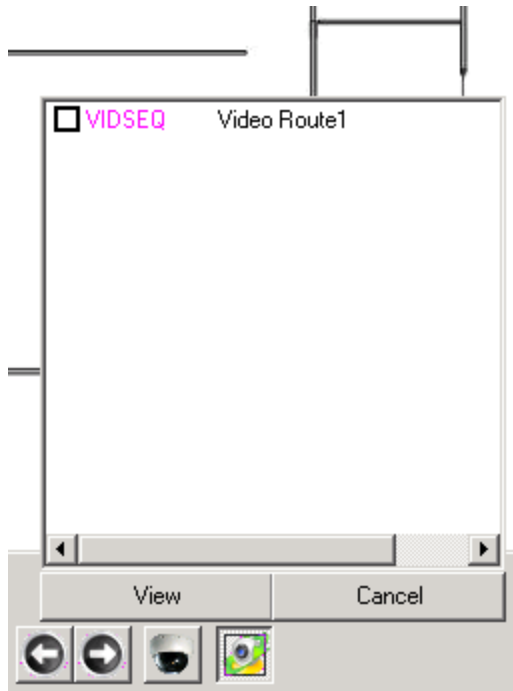
5. Enter a description in the “Description:” field, and select “Video Sequence” from the “Device” dropdown menu.
6. If you want, select a different color in which to display your Video Route from the “Color:” ellipsis button.
7. Click “OK”.
8. **Result:** the “Add Video Route” window closes, and a line displays between the camera and your mouse pointer on your Floorplan.
9. Add lines connecting the cameras in the order you previously defined. When you are finished, right-click your mouse.



10. Click “Save”.
11. Close the Customer account, and then reopen it (as though you were an Operator seeing this account for the first time). Navigate to the Plans screen, and click on the “Video Route” icon as displayed in the following screenshot:

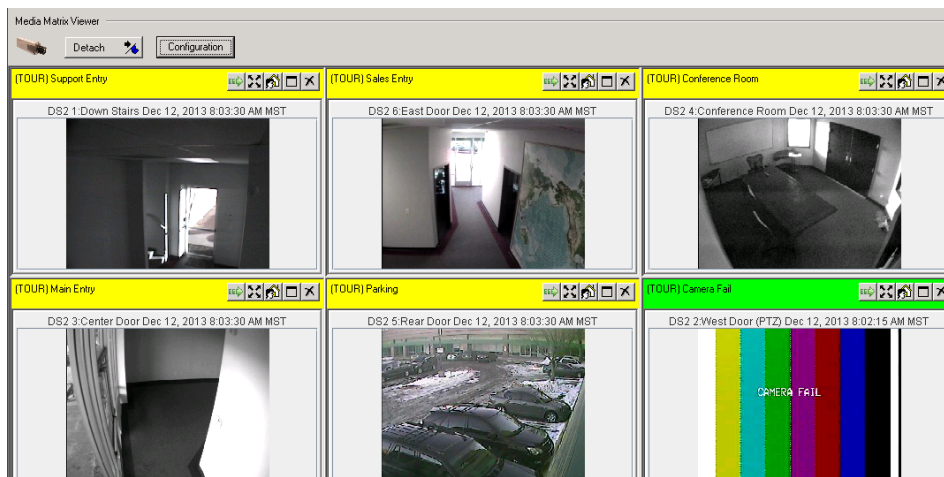


Result: A list of the Video Routes defined on your Floorplan display as shown in the following screenshot:



12. Select the Video Routes you want to display, and click “**View**”.

Result: the Manitou Media Matrix Viewer displays as shown in the following screenshot:



13. When you finish viewing the videos, close the Manitou Media Matrix Viewer.

Transferring a VideoPlus Video to another Operator

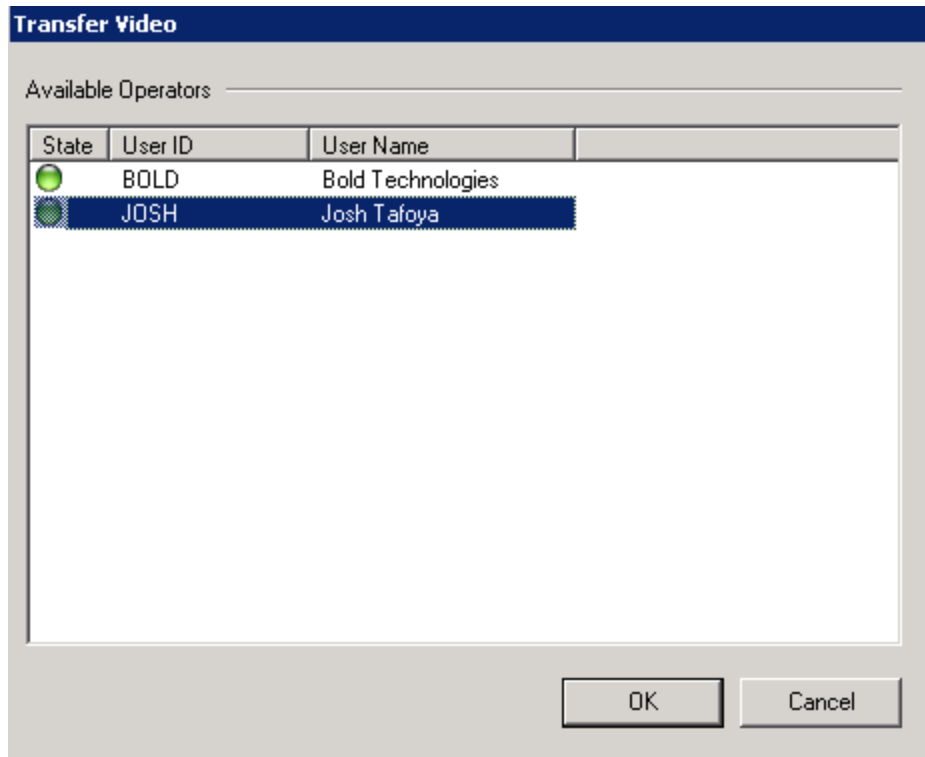
A new feature in VideoPlus is the ability to transfer videos to another Manitou Operator.

Perform the following steps to transfer a VideoPlus video to another Manitou Operator:

1. From the Manitou Media Matrix Viewer, click the “Transfer” icon located in the top right-corner of the screen as shown in the following screenshot:



Result: the “Transfer Video” window displays as shown in the following screenshot:



2. Select the Operator to whom you want to send the video, and click “OK”.

Result: the Manitou Media Matrix Viewer displays on the screen of the Operator to whom you transferred it as displayed in the following screenshot:

